



ENGLISH

OWNER'S MANUAL LCD MONITOR

Please read this manual carefully before operating your set and retain it for future reference.

LCD MONITOR MODELS
W2363D

www.lg.com

This unit has been engineered and manufactured to ensure your personal safety, however improper use may result in potential electrical shock or fire hazards. In order to allow the proper operation of all safeguards incorporated in this display, observe the following basic rules for its installation, use, and servicing.

On Safety

Use only the power cord supplied with the unit. In case you use another power cord, make sure that it is certified by the applicable national standards if not being provided by the supplier. If the power cable is faulty in any way, please contact the manufacturer or the nearest authorized repair service provider for a replacement.

The appliance coupler is used as the disconnect device.

Please make sure the device is installed near the wall outlet to which it is connected and that the outlet is easily accessible.

Operate the display only from a power source indicated in the specifications of this manual or listed on the display. If you are not sure what type of power supply you have in your home, consult with your dealer.

Overloaded AC outlets and extension cords are dangerous. So are frayed power cords and broken plugs. They may result in a shock or fire hazard. Call your service technician for replacement.

As long as this unit is connected to the AC wall outlet, it is not disconnected from the AC power source even if the unit is turned off.

Do not Open the Display:

- There are no user serviceable components inside.
- There are Dangerous High Voltages inside, even when the power is OFF.
- Contact your dealer if the display is not operating properly.

To Avoid Personal Injury :

- Do not place the display on a sloping shelf unless properly secured.
- Use only a stand recommended by the manufacturer.
- Do not drop an object on or apply impact to the product. Do not throw any toys or objects on the product screen.

It can cause injury to human, problem to product and damage the display.

To Prevent Fire or Hazards:

- Always turn the display OFF if you leave the room for more than a short period of time. Never leave the display ON when leaving the house.
- Keep children from dropping or pushing objects into the display's cabinet openings. Some internal parts carry hazardous voltages.
- Do not add accessories that have not been designed for this display.
- When the display is to be left unattended for an extended period of time, unplug it from the wall outlet.
- In the presence of thunder and lightning, never touch the power cord and signal cable because it can be very dangerous. It can cause electric shock.

On Installation

Do not allow anything to rest upon or roll over the power cord, and do not place the display where the power cord is subject to damage.

Do not use this display near water such as near a bathtub, washbowl, kitchen sink, laundry tub, in a wet basement, or near a swimming pool.

Displays are provided with ventilation openings in the cabinet to allow the release of heat generated during operation. If these openings are blocked, built-up heat can cause failures which may result in a fire hazard. Therefore, NEVER:

- Block the bottom ventilation slots by placing the display on a bed, sofa, rug, etc.
- Place the display in a built-in enclosure unless proper ventilation is provided.
- Cover the openings with cloth or other material.
- Place the display near or over a radiator or heat source.

Do not rub or strike the Active Matrix LCD with anything hard as this may scratch, mar, or damage the Active Matrix LCD permanently.

Do not press the LCD screen with your finger for a long time as this may cause some afterimages.

Some dot defects may appear as Red, Green or Blue spots on the screen. However, this will have no impact or effect on the display performance.

If possible, use the recommended resolution to obtain the best image quality for your LCD display. If used under any mode except the recommended resolution, some scaled or processed images may appear on the screen. However, this is characteristic of the fixed-resolution LCD panel.

Leaving a fixed image on the screen for a long time may cause damage to the screen and cause image burn-in. Make sure to use a screen saver on the product. Burn-in and related problems are not covered by the warranty on this product.

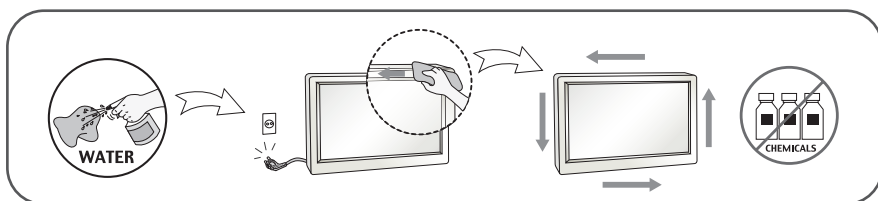
Do not shock or scratch the front and sides of the screen with metallic objects. Otherwise, it may cause damage to the screen.

Make sure the panel faces forward and hold it with both hands to move. If you drop the product, the damaged product can cause electric shock or fire. Contact an authorized the service center for repair.

Avoid high temperatures and humidity.

On Cleaning

- Unplug the display before cleaning the face of the display screen.
- Use a slightly damp (not wet) cloth. Do not use an aerosol directly on the display screen because over-spraying may cause electrical shock.
- When cleaning the product, unplug the power cord and scrub gently with a soft cloth to prevent scratching. Do not clean with a wet cloth or spray water or other liquids directly onto the product. An electric shock may occur. (Do not use chemicals such as benzene, paint thinners or alcohol)
- Spray water onto a soft cloth 2 to 4 times, and use it to clean the front frame; wipe in one direction only. Too much moisture may cause staining.



On Repacking

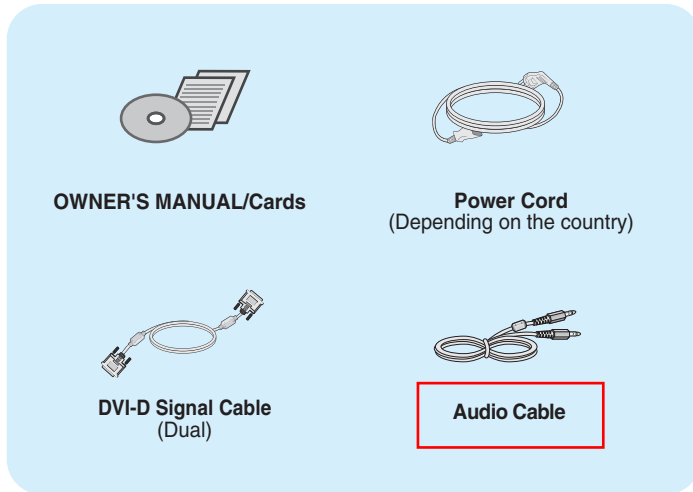
- Do not throw away the carton and packing materials. They make an ideal container in which to transport the unit. When shipping the unit to another location, repack it in its original material.

On Disposal (Only, Hg lamp used LCD Monitor)

- The fluorescent lamp used in this product contains a small amount of mercury.
- Do not dispose of this product with general household waste.
- Disposal of this product must be carried out in accordance to the regulations of your local authority.

!!! Thank for selecting LGE products !!!

Please make sure the following items are included with your monitor. If any items are missing, contact your dealer.



IMPORTANT

- This accessories may look different from those shown here.
- User must use shielded signal interface cables (DVI-D cable) with ferrite cores to maintain standard compliance for the product.
- **Requirements for 3D (3 Dimensional) imagery**
 1. NVIDIA® GeForce® **3D Vision kit(Purchase Separately)**.
 2. Compatible NVIDIA GPU(Purchase Separately)
For a complete list of supported cards, please refer to the website: www.nvidia.com/3dvision .
 3. **Minimum System Specifications**
 - (1) Windows® Vista 32/64 bit -or- Windows 7 32/64 bit
 - (2) Intel® Core™, 2 Duo -or- AMD Athlon™, X2 CPU or better
 - (3) System Memory 1 GB (2 GB Recommended)
 - (4) Available Free Disk Space 100 MB

- After using the monitor for an hour, for protecting eyes, take a rest of eyes over 5 minutes.

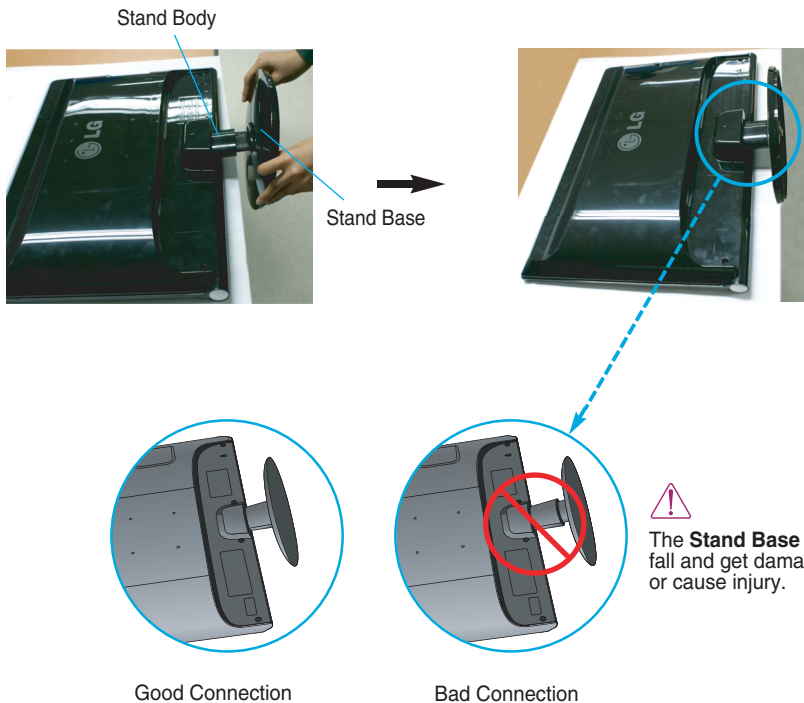
Before setting up the monitor, ensure that the power to the monitor, the computer system, and other attached devices is turned off.

Connecting and Disassembling the stand

1. Place the monitor face down on the soft cloth.



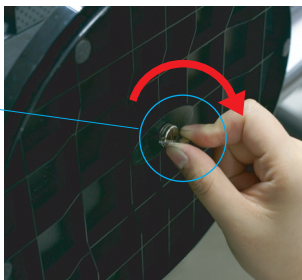
2. Assemble the **Stand Base** into the **Stand Body** in the correct direction. Make sure you push the **Stand Base** until the end.



Connecting the Display

- 3.** Turn the screw to the right to fix the **Stand Body** to the **Stand Base**.

Screw
Turn the screw
by using the
screw handle.



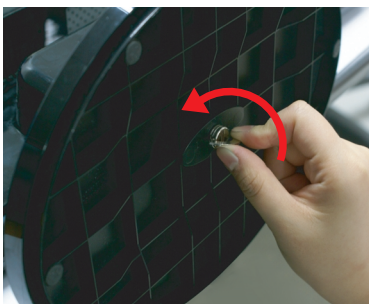
- 4.** Then fold the screw handle flat.



- 5.** Once assembled take the monitor up carefully and face the front side.



- 6.** To disconnect the **Stand Base** from the **Stand Body**, unfold the screw handle and turn it to the left.



IMPORTANT

- This picture depicts the general model of connection. Your monitor may differ from the items shown in the picture.
- Do not carry the product upside down holding only the stand base. The product may fall and get damaged or cause injury.

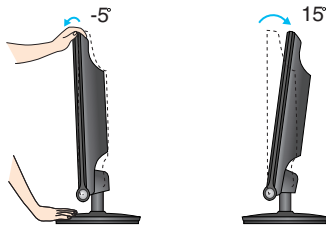
Before setting up the monitor, ensure that the power to the monitor, the computer system, and other attached devices is turned off.

Positioning your display

After installation, adjust the angle as shown below.

1. Adjust the position of the panel in various ways for maximum comfort.

- **Tilt Range:** -5° to 15°



- Do not touch or press the screen when adjusting the angle of the monitor.
- When adjusting the angle of the screen, do not put your finger(s) in between the head of the monitor and the stand body. You can hurt your finger(s).



ERGONOMIC

- It is recommended that in order to maintain an ergonomic and comfortable viewing position, the forward tilt angle of the monitor should not exceed 5 degrees.

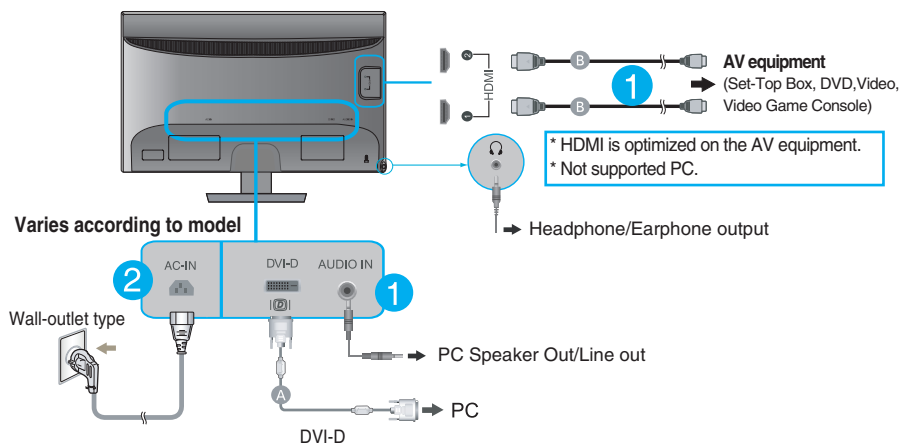
Connecting with the PC/AV equipment


1. Before setting up the monitor, ensure that the power to the monitor, the computer system, and other attached devices is turned off.
2. Connect signal input cable ① and power cord ② in order, then tighten the screw of the signal cable.

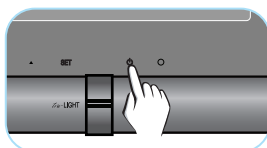
- A Connect DVI-D (Digital signal) Cable
- B Connect HDMI Cable (HDMI1, HDMI2)

NOTE

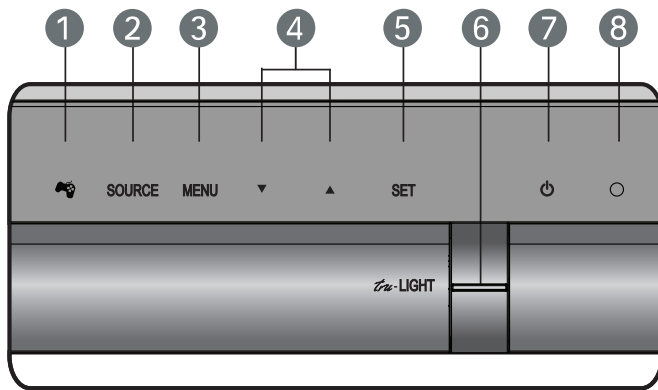
- This is a simplified representation of the rear view.
- This rear view represents a general model; your display may differ from the view as shown.



3. Press the Power Button () on the front panel to turn the power on.



Front Panel Controls



1



Button

Use this button to enter **THRU MODE**, **SRS TRUSURROUND HD**, **ARC** or **AUTO BRIGHT** menus.

For more information, refer to page 13 to 14.

2

SOURCE Button

When two input signals are connected, you can select the input signal (DVI-D/HDMI1/HDMI2) you want. When only one signal is connected, it is automatically detected.

3

MENU Button

Use this button to enter or exit the On Screen Display.

OSD LOCKED/UNLOCKED

This function allows you to lock the current control settings, so that they cannot be inadvertently changed. Press and hold the **MENU button** for several seconds. The message "**OSD LOCKED**" should appear.

You can unlock the OSD controls at any time by pushing the **MENU button** for several seconds. The message "**OSD UNLOCKED**" should appear.



4 ▼ ▲ Buttons

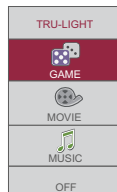
Use these buttons to select or adjust functions in the On Screen Display.

5 SET Button

Use this button to enter a selection in the On Screen Display.

6 TRU-LIGHT Button

You can select **GAME**, **MOVIE** or **MUSIC** by using this button and the LED light shape will change according to each mode. When you select **OFF**, the LED light will be turned off.



7 Power Button

Use this button to turn the display on or off.

8 Power Indicator

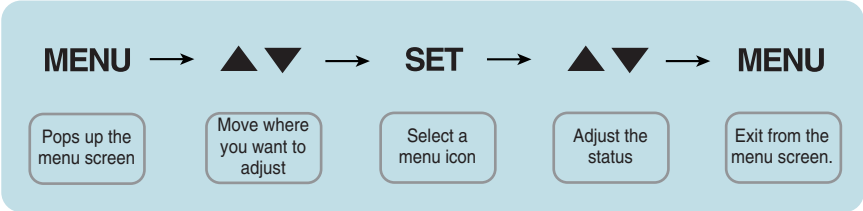
The power indicator stays blue if the display is running properly (On Mode). If the display is in Sleep Mode (Energy Saving), the power indicator is blinking blue.

Screen Adjustment

Making adjustments to the image size, position and operating parameters of the display is quick and easy with the On Screen Display Control system.

A short example is given below to familiarize you with the use of the controls. The following section is an outline of the available adjustments and selections you can make using the OSD.

To make adjustments in the On Screen Display, follow these steps:



- 1 Press the **MENU Button**, then the main menu of the OSD appears.
- 2 To access a control, use the **▼ / ▲ Buttons**. When the icon you want becomes highlighted, press the **SET Button**.
- 3 Use the **▼ / ▲ Buttons** to adjust the image to the desired level.
Use the **SET Button** to select other sub-menu items.
- 4 Press the **MENU Button** once to return to the main menu to select another function. Press the **MENU Button** twice to exit from the OSD.

On Screen Display (OSD) Control Adjustment


The following table indicates all the On Screen Display control, adjustment, and setting menus.

3D mode : 3D mode output
DVI-D : DVI-D(Digital signal) input
HDMI : HDMI input

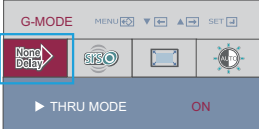
Main menu	Sub-menu	Supported input	Description
G-MODE	THRU MODE	DVI-D HDMI	Use Frame-Buffer to prevent picture delay.
	SRS TRUSURROUND HD	3D mode DVI-D HDMI	Use 3D surround for live sound effect.
	ARC	3D mode DVI-D HDMI	Use aspect ratio control.
	AUTO BRIGHT	DVI-D HDMI	To control screen brightness automatically.
PICTURE	BRIGHTNESS CONTRAST	DVI-D HDMI	To adjust the brightness, contrast and gamma of the screen.
	GAMMA	3D mode DVI-D HDMI	
	BLACK LEVEL	HDMI	To set offset level
COLOR	PRESET (sRGB / 6500K / 9300K)	3D mode DVI-D HDMI	To customize the color of the screen.
	RED		
	GREEN		
	BLUE		
	HUE		
	SATURATION	HDMI	
	COLOR RESET	3D mode DVI-D HDMI	
TRACKING	SHARPNESS	3D mode DVI-D HDMI	To adjust the clearness of the screen.
SETUP	LANGUAGE VOLUME	3D mode DVI-D HDMI	Additional settings
	OVERSCAN	HDMI	
	RTC	DVI-D HDMI	
	LIGHTING LEVEL POWER INDICATOR FACTORY RESET	3D mode DVI-D HDMI	

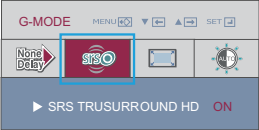
NOTE


- The order of icons may differ depending on the model (12 to 19).

The OSD screen will appear when you press the  button on the front of the monitor.

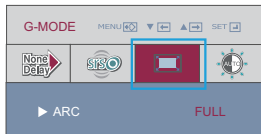


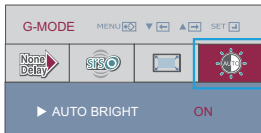
Main menu	Sub menu	Description
	THRU MODE ON	<p>This prevents the response speed of the display from delaying by disabling the frame buffer memory. Set this for the game mode.</p> <p>OFF</p> <p>This shows the optimized screen by using the frame buffer memory. But, the response speed of the display can be slower than the output of the actual PC.</p> <p>*What is frame buffer memory?</p> <p>This is the function to provide the optimized display by saving the video in frame units before being displayed on the screen.</p>
<p>■ When operating 3D screen, THRU MODE function is inactivated.</p> <p>■ It is not supported in 1080i input signal.</p>		

	SRS TRUSURROUND HD ON	<p>Turn on SRS function, offer 3D surround for live sound effect.</p> <p>OFF</p> <p>Turn off SRS function.</p>
-------------------------------------------------------------------------------------	------------------------------	-----------------------------------------------------------------------------------------------------------------------

- ▶  is a trademark of SRS Labs, Inc.
- ▶ TruSurround HD technology is incorporated under license from SRS Labs, Inc.

On Screen Display(OSD) Selection and Adjustment

Main menu	Sub menu	Description
	ARC	1:1 The picture will be displayed depends on Input resolution.No Scaling. If 640 x 480 resolution input, the picture will just display 640 x 480 size even though the 1920 x 1080 size panel. ORIGINAL The picture will be displayed with input resolution ratio scaling. If 640 x 480 resolution input, the picture will keep at 4:3 ratio scaling. FULL The picture will be displayed with Full size.

	AUTO BRIGHT	ON This adjusts the screen brightness automatically. When set to ON , this adjusts the screen brightness automatically to the display data level to provide the optimal play condition. OFF Auto brightness adjustment function is turned OFF .
-----------------------------------------------------------------------------------	--------------------	------------------------------------------------------------------------------------------------------------------------------------------------------------------------------------------------------------------------------------------------------------------------------------------

- When operating 3D screen, **AUTO BRIGHT** function is inactivated.

On Screen Display(OSD) Selection and Adjustment

You were introduced to the procedure of selecting and adjusting an item using the OSD system. Listed below are the icons, icon names, and icon descriptions of the all items shown on the Menu.

Press the MENU Button, then the main menu of the OSD appears.

Main Menu

PICTURE

COLOR

TRACKING

SETUP

■ MENU ↵ : Exit

■ ▼ ◀ ▶ ▲ : Adjust (Decrease/Increase)

■ SET ⏏ : Enter

↓ : Select another sub-menu

↺ : Restart to select sub-menu

Button Tip

Menu Name

PICTURE

MENU ↵ ▼ ◀ ▶ ▲ SET ⏏ ↓

Icons


☀

🇮🇹


📺

⚙


BRIGHTNESS

☀  100

CONTRAST

🌑  70

GAMMA

γ  0

BLACK LEVEL


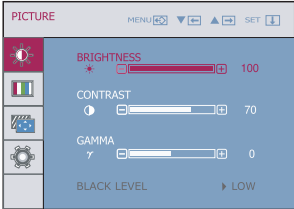

▶ LOW

Sub-menus

NOTE

- OSD (On Screen Display) menu languages on the monitor may differ from the manual.

15

Main menu	Sub menu	Description
	PICTURE	
DVI-D input		
	BRIGHTNESS CONTRAST GAMMA BLACK LEVEL	<p>To adjust the brightness of the screen.</p> <p>To adjust the contrast of the screen.</p> <p>Set your own gamma value: -50 / 0 / 50 On the monitor, high gamma values display whitish images and low gamma values display blackish images.</p>
HDMI input		
	BLACK LEVEL	<p>You can set the off set level. If you select 'HIGH', the screen will be bright and if you select 'LOW', the screen will be dark.</p> <p>* Off set? As the criteria for video signal, it is the darkest screen the monitor can show.</p>
<ul style="list-style-type: none">■ MENU : Exit■ ▼ : Decrease■ ▲ : Increase■ SET : Select another sub-menu		
<ul style="list-style-type: none">■ When operating 3D screen, BRIGHTNESS, CONTRAST function is inactivated.		

Main menu	Sub menu	Description
-----------	----------	-------------



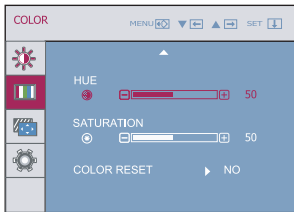
COLOR



DVI-D input



HDMI input



- MENU : Exit
- ▼ : Decrease
- ▲ : Increase
- SET : Select another sub-menu

- The HUE, the SATURATION may not be supported for some input signal settings.

PRESET

- sRGB: Set the screen color to fit the sRGB standard color specification.
- 6500K: Slightly reddish white.
- 9300K: Slightly bluish white.

RED

Set your own red color levels.

GREEN

Set your own green color levels.

BLUE

Set your own blue color levels.

HUE

Set your own hue levels.

SATURATION

Set your own saturation levels.

COLOR RESET

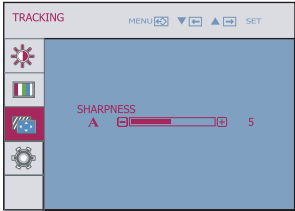
Prestore “PICTURE” and “COLOR” default settings.

Main menu	Sub menu	Description
-----------	----------	-------------



TRACKING

DVI-D, HDMI input



SHARPNESS To adjust the clearness of the screen.

- **MENU** : Exit
- ▼ : Decrease
- ▲ : Increase
- **SET** : Select another sub-menu

On Screen Display(OSD) Selection and Adjustment

Main menu	Sub menu	Description
<div><div>SETUP</div><div></div></div> <div>SETUP</div>		
DVI-D input	<div>LANGUAGE</div> <div>VOLUME</div> <div>OVERSCAN</div> <div>R T C</div>	<div><div>LANGUAGE</div><div>To choose the language in which the control names are displayed.</div></div> <div><div>VOLUME</div><div>To adjust the volume of headphone/Earphone.</div></div> <div><div>OVERSCAN</div><div>Removes noise that may occur at the edges of an image when HDMI is connected to an external device. When ON is selected, the image size is reduced to prevent noise. When OFF is selected, the original image size is maintained regardless of noise. (Only for HDMI input)</div></div> <div><div>R T C</div><div>If you set ON, you enable the Response Time Control function. If you set OFF, you disable the Response Time Control function.</div></div>
HDMI input	<div>LANGUAGE</div> <div>VOLUME</div> <div>OVERSCAN</div> <div>R T C</div>	<div><div>R T C</div><div>If you set ON, you enable the Response Time Control function. If you set OFF, you disable the Response Time Control function.</div></div>
<div><div>SETUP</div><div></div></div> <div><div>LANGUAGE</div><div>LIGHTING LEVEL</div><div>POWER INDICATOR</div><div>FACTORY RESET</div></div>	<div>LIGHTING LEVEL</div> <div>POWER INDICATOR</div> <div>FACTORY RESET</div>	<div><div>LIGHTING LEVEL</div><div>LED would response according to the value of the sound input signal(sound). If there is no sound input or it is less than set range, LED would not response.</div></div> <div><div>POWER INDICATOR</div><div>Use this function to set the power indicator on the front side of the monitor to ON or OFF. If you set OFF, it will go off. If you set ON at any time, the power indicator will automatically be turned on.</div></div> <div><div>FACTORY RESET</div><div>Restore all factory default settings except "LANGUAGE". Press the ▲, ▼ buttons to reset immediately.</div></div>
<div><div>■ MENU</div><div>: Exit</div></div> <div><div>■ ▼</div><div>: Decrease</div></div> <div><div>■ ▲</div><div>: Increase</div></div> <div><div>■ SET</div><div>: Select another sub-menu</div></div>		
<div><div>■ When operating 3D screen, RTC function is inactivated.</div><div>■ If this does not improve the screen image. restore the factory default settings.</div></div>		

- **MENU** : Exit
- ▼ : Decrease
- ▲ : Increase
- **SET** : Select another sub-menu

- When operating 3D screen, **RTC** function is inactivated.
- If this does not improve the screen image, restore the factory default settings.

Check the following before calling for service.

No image appears	
<ul style="list-style-type: none">● Is the power cord of the display connected?● Is the power indicator light on?● Is the power indicator blinking?● Do you see an "OUT OF RANGE" message on the screen?● Do you see a "CHECK SIGNAL CABLE" message on the screen?	<ul style="list-style-type: none">• Check and see if the power cord is connected properly to the power outlet.• Press the Power button.• If the display is in power saving mode, try moving the mouse or pressing any key on the keyboard to bring up the screen.• Try to turn on the PC.• This message appears when the signal from the PC (video card) is out of horizontal or vertical frequency range of the display. See the 'Specifications' section of this manual and configure your display again.• This message appears when the signal cable between your PC and your display is not connected. Check the signal cable and try again.
Do you see a "OSD LOCKED" message on the screen?	
<ul style="list-style-type: none">● Do you see "OSD LOCKED" when you push MENU button?	<ul style="list-style-type: none">• You can secure the current control settings, so that they cannot be inadvertently changed. You can unlock the OSD controls at any time by pushing the MENU button for several seconds: the message "OSD UNLOCKED" will appear.

Display image is incorrect

- | | |
|--------------------------------------------------------------------------------------------------|-------------------------------------------------------------------------------------------------------------------------------------------------------------------------------------------------------------------------------------------------------------------------------------------------------------------------------|
| <ul style="list-style-type: none"> ● The screen color is mono or abnormal. | <ul style="list-style-type: none"> • Check if the signal cable is properly connected and use a screwdriver to fasten if necessary. • Make sure the video card is properly inserted in the slot. • Set the color setting higher than 24 bits (true color) at Control Panel - Settings. |
| <ul style="list-style-type: none"> ● The screen blinks. | <ul style="list-style-type: none"> • Check if the screen is set to interlace mode and if yes, change it to the recommend resolution. |

Do you see an "Unrecognized monitor, Plug&Play (VESA DDC) monitor found" message?

- | | |
|---------------------------------------------------------------------------------------------------|--------------------------------------------------------------------------------------------------------------------------------------------------------------------------------------------------------------------------------------------------------------------------------------------------------------------------------------------------------------|
| <ul style="list-style-type: none"> ● Have you installed the display driver? | <ul style="list-style-type: none"> • Be sure to install the display driver from the display driver CD (or diskette) that comes with your display. Or, you can also download the driver from our web site: http://www.lg.com. • Make sure to check if the video card supports Plug&Play function. |
|---------------------------------------------------------------------------------------------------|--------------------------------------------------------------------------------------------------------------------------------------------------------------------------------------------------------------------------------------------------------------------------------------------------------------------------------------------------------------|

The Audio function is not working

- | | |
|---------------------------------------------------------------------------------------|---------------------------------------------------------------------------------------------------------------------------------------------------------------------------------------------------------------------------------------------------------------------------|
| <ul style="list-style-type: none"> ● Picture OK & No sound. | <ul style="list-style-type: none"> • Check whether volume is "0". • Check whether the cable is correctly connected. (DVI-D cable, HDMI cable, Headphone cable, Audio cable) • Check sound format. Not supply to compressed sound format. |
|---------------------------------------------------------------------------------------|---------------------------------------------------------------------------------------------------------------------------------------------------------------------------------------------------------------------------------------------------------------------------|

IMPORTANT

- Check **Control Panel --> Display --> Settings** and see if the frequency or the resolution were changed. If yes, readjust the video card to the recommend resolution.
- If the recommended resolution (optimal resolution) is not selected, letters may be blurred and the screen may be dimmed, truncated or biased. Make sure to select the recommend resolution.
- The setting method can differ by computer and O/S (Operation System), and resolution mentioned above may not be supported by the video card performance. In this case, please ask to the computer or the video card manufacturer.

Specifications

Display	58.4 cm (23.0 inch) Flat Panel Active matrix-TFT LCD Anti-Glare coating Visible diagonal size: 58.4 cm 0.266 mm x 0.266 mm (Pixel Pitch)	
Sync Input	Horizontal Freq.	Digital: 30 kHz to 141 kHz HDMI: 30 kHz to 83 kHz
	Vertical Freq.	Digital: 56 Hz to 120 Hz HDMI: 56 Hz to 61 Hz
	Input Form	Digital (HDCP, Separate Sync.)
Video Input	Signal Input	DVI-D Connector (Digital) 19 pin HDMI Connector (Digital)
	Input Form	Digital, HDMI
Resolution	Max	VESA 1920 x 1080 @ 120 Hz
	Recommend	VESA 1920 x 1080 @ 60 Hz (2D)
	Recommend	1920 x 1080 @ 120 Hz (3D)
Plug&Play	DDC 2B (Digital, HDMI)	
Power Consumption	On Mode	: 49 W (Typ.)
	Sleep Mode	≤ 1.6 W (DVI-D / HDMI)
	Off Mode	≤ 1 W
Dimensions & Weight	With Stand	
	Width	55.55 cm (21.87 inch)
	Height	41.92 cm (16.50 inch)
	Depth	20.60 cm (8.11 inch)
	Without Stand	
	Width	55.55 cm (21.87 inch)
	Height	40.95 cm (16.12 inch)
	Depth	7.33 cm (2.88 inch)
	Weight(excl. packing)	5.2 kg (11.46 lb)
Tilt Range	-5° to 15°	
Power Input	AC 100-240 V~ 50/60 Hz 0.8 A	
Environmental Conditions	Operating Conditions	
	Temperature	10 °C to 35 °C
	Humidity	10 % to 80 % non-Condensing
	Storage Conditions	
	Temperature	-20 °C to 60 °C
	Humidity	5 % to 90 % non-Condensing
Stand Base	Attached (), Detached (O)	
Power cord	Wall-outlet type	

NOTE

- Information in this document is subject to change without notice.

Preset Modes (Resolution) - DVI-D(Digital) INPUT

Display Modes (Resolution)		Horizontal Freq. (kHz)	Vertical Freq. (Hz)
1	640 x 350	31.469	70
2	720 x 400	31.468	70
3	640 x 480	31.469	60
4	640 x 480	37.500	75
5	800 x 600	37.879	60
6	800 x 600	46.875	75
7	1024 x 768	48.363	60
8	1024 x 768	60.123	75
9	1152 x 864	67.500	75
10	1280 x 1024	63.981	60
11	1280 x 1024	79.976	75
12	1680 x 1050	64.674	60
13	1680 x 1050	65.290	60
*14	1920 x 1080	67.500	60
**15	1920 x 1080	113.721	100
**16	1920 x 1080	125.668	110
**17	1920 x 1080	137.860	120

*Recommend Mode

**3D Mode output

HDMI Vedio INPUT

Display Modes (Resolution)		Horizontal Freq. (kHz)	Vertical Freq. (Hz)
1	480P	31.50	60
2	576P	31.25	50
3	720P	37.50	50
4	720P	45.00	60
5	1080i	28.12	50
6	1080i	33.75	60
7	1080P	56.25	50
8	1080P	67.50	60

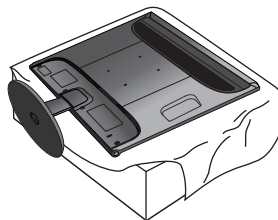
Indicator

MODE	LED Color
On Mode	Blue
Sleep Mode	Blue Blinking
Off Mode	Off

Installing the Wall mount plate

This monitor satisfies the specifications of the Wall mount plate or the interchange device.

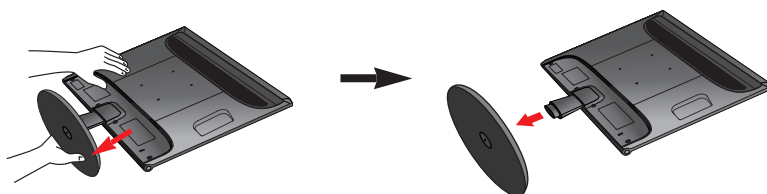
- 1.** Place the monitor face down on the soft cloth.



- 2.** To disconnect the Stand Base from the Stand Body, unfold the screw handle and turn it to the left.



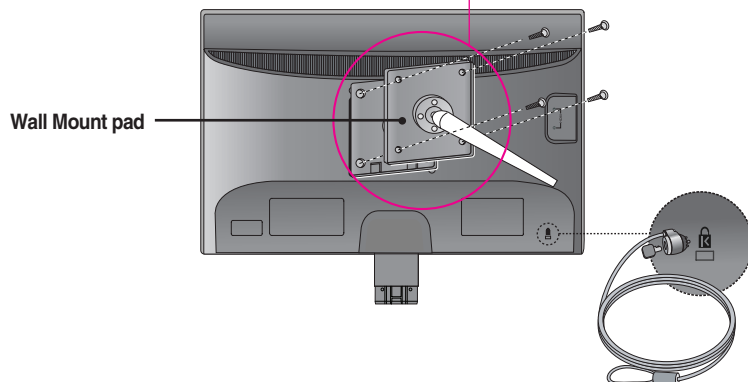
- 3.** Pull out the Stand Base to remove.



4. Install the Wall mount plate.

Wall mount plate (Separate purchase)

This is stand-type or wall mount type and is connectable with Wall mount plate. Please refer to the installation guide for more details, which is provided when Wall mount plate is purchased.



<Screw Mounting Interface Dimension>

Hole spacing : 100 mm x 100 mm.

Kensington Security Slot

Connected to a locking cable that can be purchased separately at most computer stores.

NOTE

- VESA compatible only with respect to screw mounting interface dimensions and mounting screw specifications
- Please use VESA standard as below.
 - * 784.8 mm and under (30.9 inch)
 - Wall Mount Pad Thickness : 2.6 mm
 - Screw : ϕ 4.0 mm x Pitch 0.7 mm x Length 10 mm
 - * 787.4 mm and above (31.0 inch)
 - Please use VESA standard wall mount pad and screws.



Make sure to read the Important Precautions before using the product.

Keep the User's Guide(CD) in an accessible place for future reference.

The model and serial number of the SET is located on the back and one side of the SET. Record it below should you ever need service.

MODEL _____

SERIAL _____