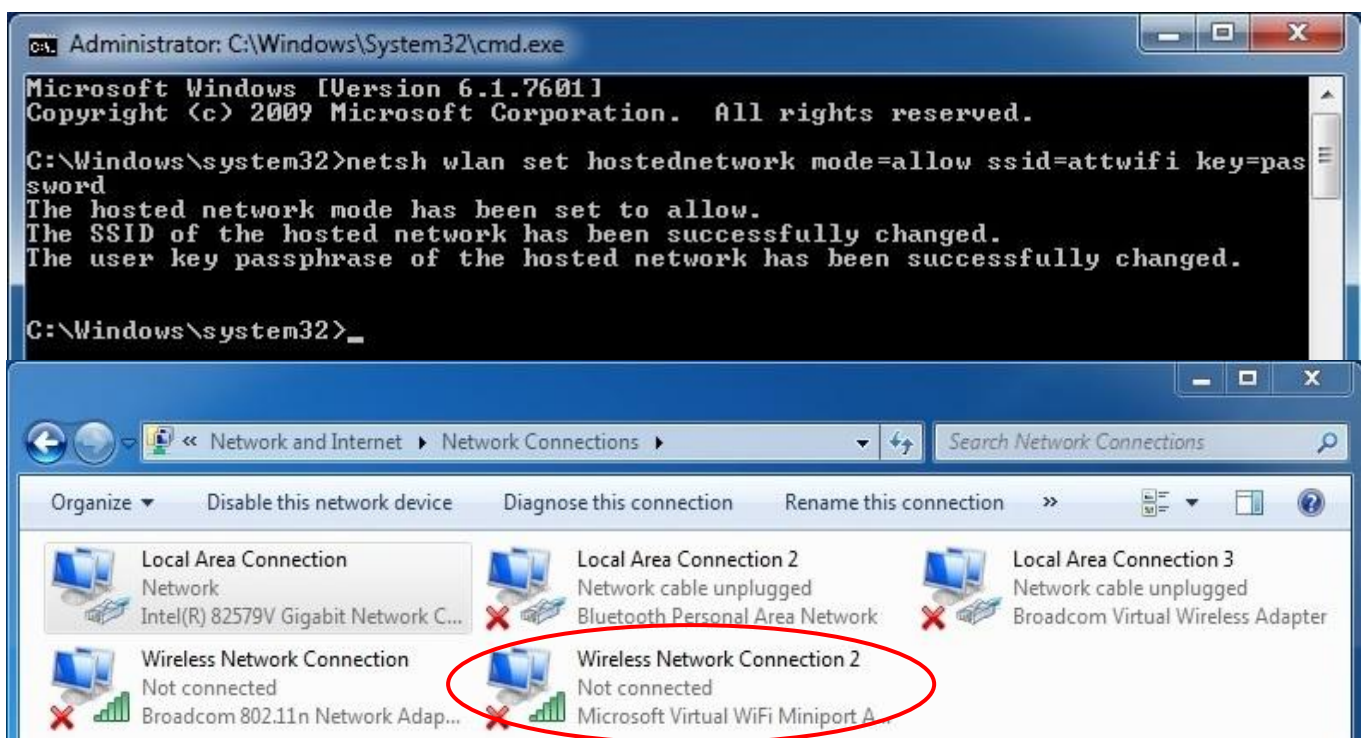


Instructions

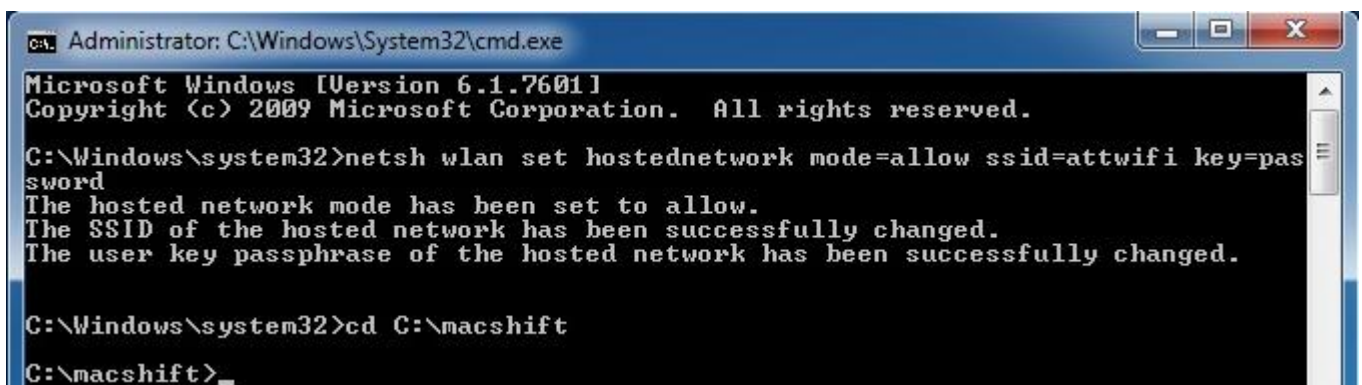
- 1) Download macshift: <http://devices.natetrue.com/macshift/macshift.zip>
- 2) Unzip the contents anywhere you want
- 3) Run command prompt as administrator
- 4) Enter the following command (replace password with one of your choosing or leave it as it is)

netsh wlan set hostednetwork mode=allow ssid=attwifi key=password

You should see under network connections on your computer a virtual wireless network adaptor has been created if it wasn't there before.



- 5) Navigate in command prompt to the folder where you extracted macshift to. For example I put the contents of the zip file in a folder on my "C" drive.

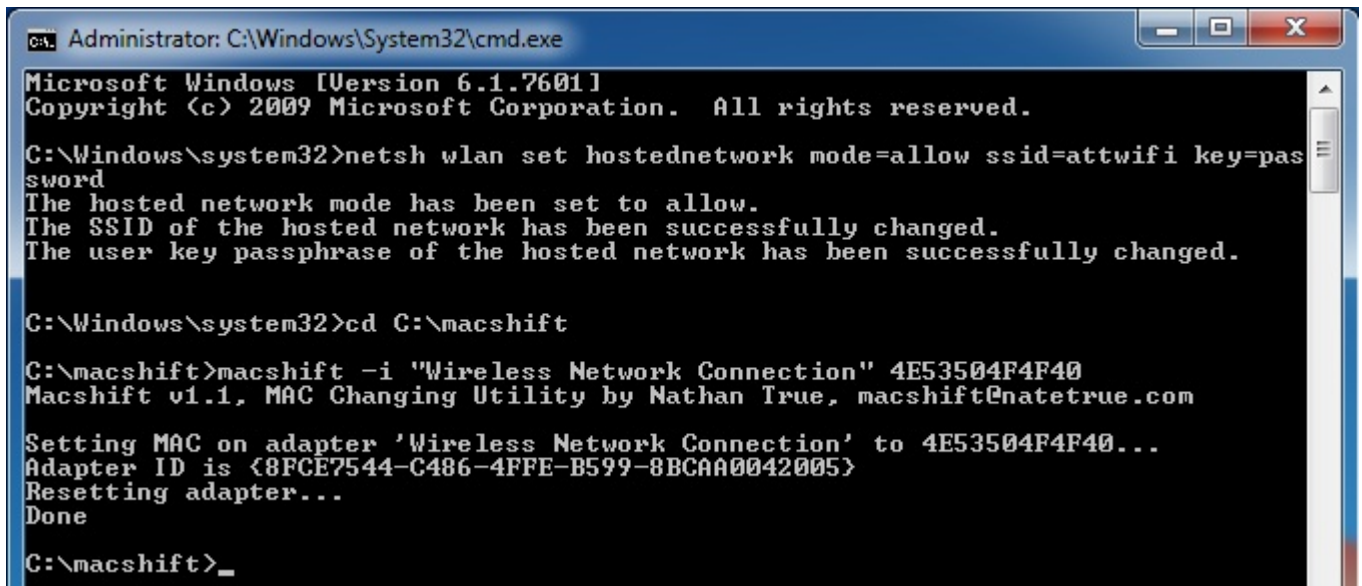


- 6) Enter the following command

```
macshift -i "YOUR WIFI CONNECTION NAME" "macaddress"
```

Change "YOUR WIFI CONNECTION NAME" to the name of your wireless connection, for example mine was "Wireless Network Connection". Replace "macaddress" with one of those listed in this spreadsheet

<https://docs.google.com/spreadsheet/cc?key=0AvvH5W4E2IldwEFCUkxrM085ZGp0UkZlenp6SkJablE#gid=0>



```
Administrator: C:\Windows\System32\cmd.exe
Microsoft Windows [Version 6.1.7601]
Copyright (c) 2009 Microsoft Corporation. All rights reserved.

C:\Windows\system32>netsh wlan set hostednetwork mode=allow ssid=attwifi key=password
The hosted network mode has been set to allow.
The SSID of the hosted network has been successfully changed.
The user key passphrase of the hosted network has been successfully changed.

C:\Windows\system32>cd C:\macshift

C:\macshift>macshift -i "Wireless Network Connection" 4E53504F4F40
Macshift v1.1, MAC Changing Utility by Nathan True, macshift@natetrue.com

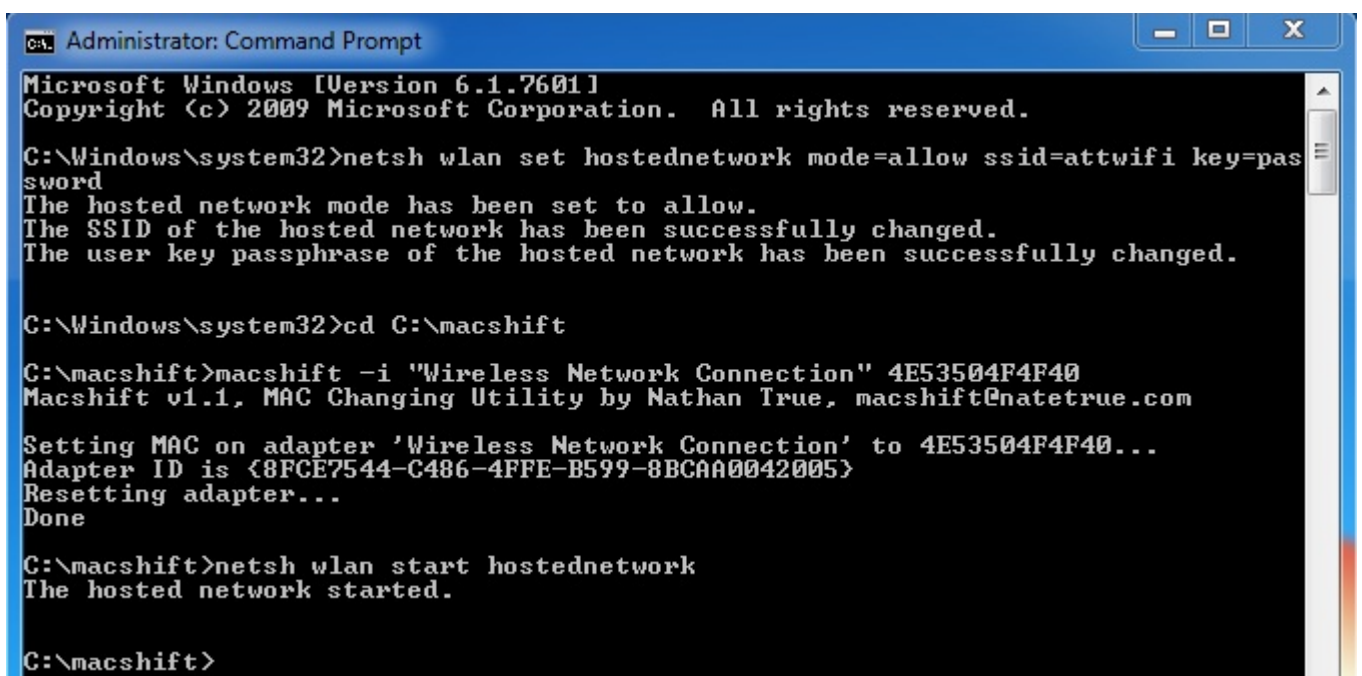
Setting MAC on adapter 'Wireless Network Connection' to 4E53504F4F40...
Adapter ID is {8FCE7544-C486-4FFE-B599-8BCAA0042005}
Resetting adapter...
Done

C:\macshift>
```

- 7) Then to start the hotspot connection enter the following command

```
netsh wlan start hostednetwork
```

You should see that the virtual wireless network adaptor is now active with "attwifi" as the SSID and the mac address should be the one you entered in the previous step



```
Administrator: Command Prompt
Microsoft Windows [Version 6.1.7601]
Copyright (c) 2009 Microsoft Corporation. All rights reserved.

C:\Windows\system32>netsh wlan set hostednetwork mode=allow ssid=attwifi key=password
The hosted network mode has been set to allow.
The SSID of the hosted network has been successfully changed.
The user key passphrase of the hosted network has been successfully changed.

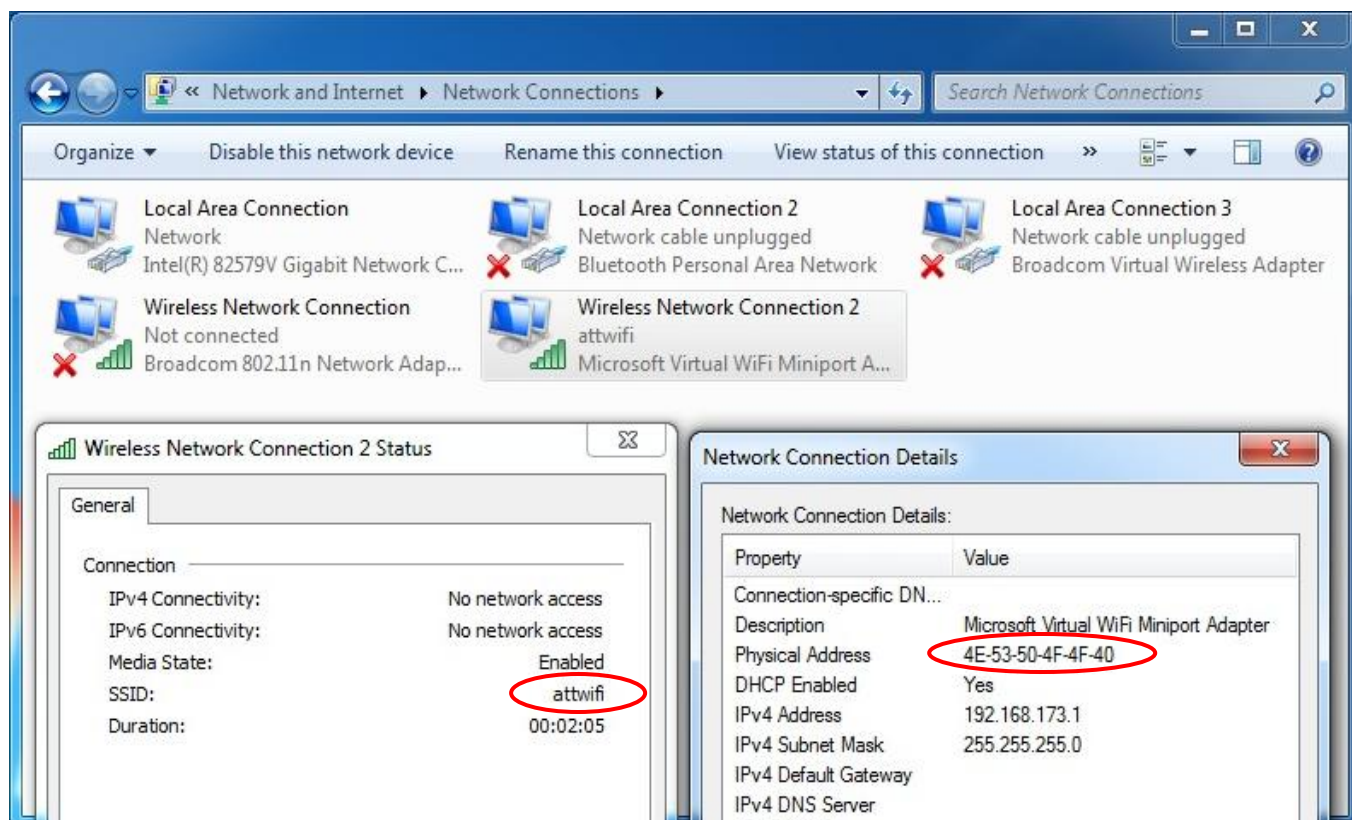
C:\Windows\system32>cd C:\macshift

C:\macshift>macshift -i "Wireless Network Connection" 4E53504F4F40
Macshift v1.1, MAC Changing Utility by Nathan True, macshift@natetrue.com

Setting MAC on adapter 'Wireless Network Connection' to 4E53504F4F40...
Adapter ID is {8FCE7544-C486-4FFE-B599-8BCAA0042005}
Resetting adapter...
Done

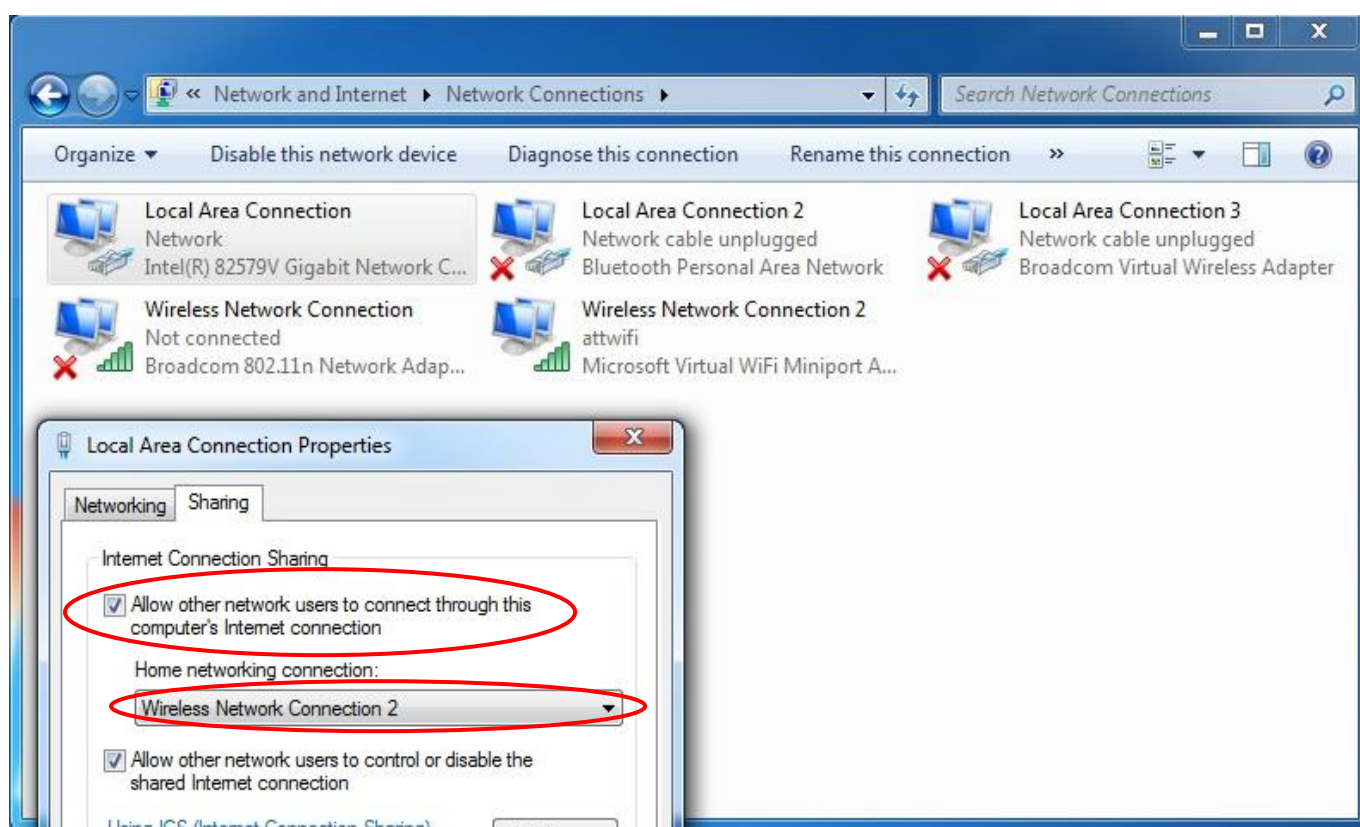
C:\macshift>netsh wlan start hostednetwork
The hosted network started.

C:\macshift>
```

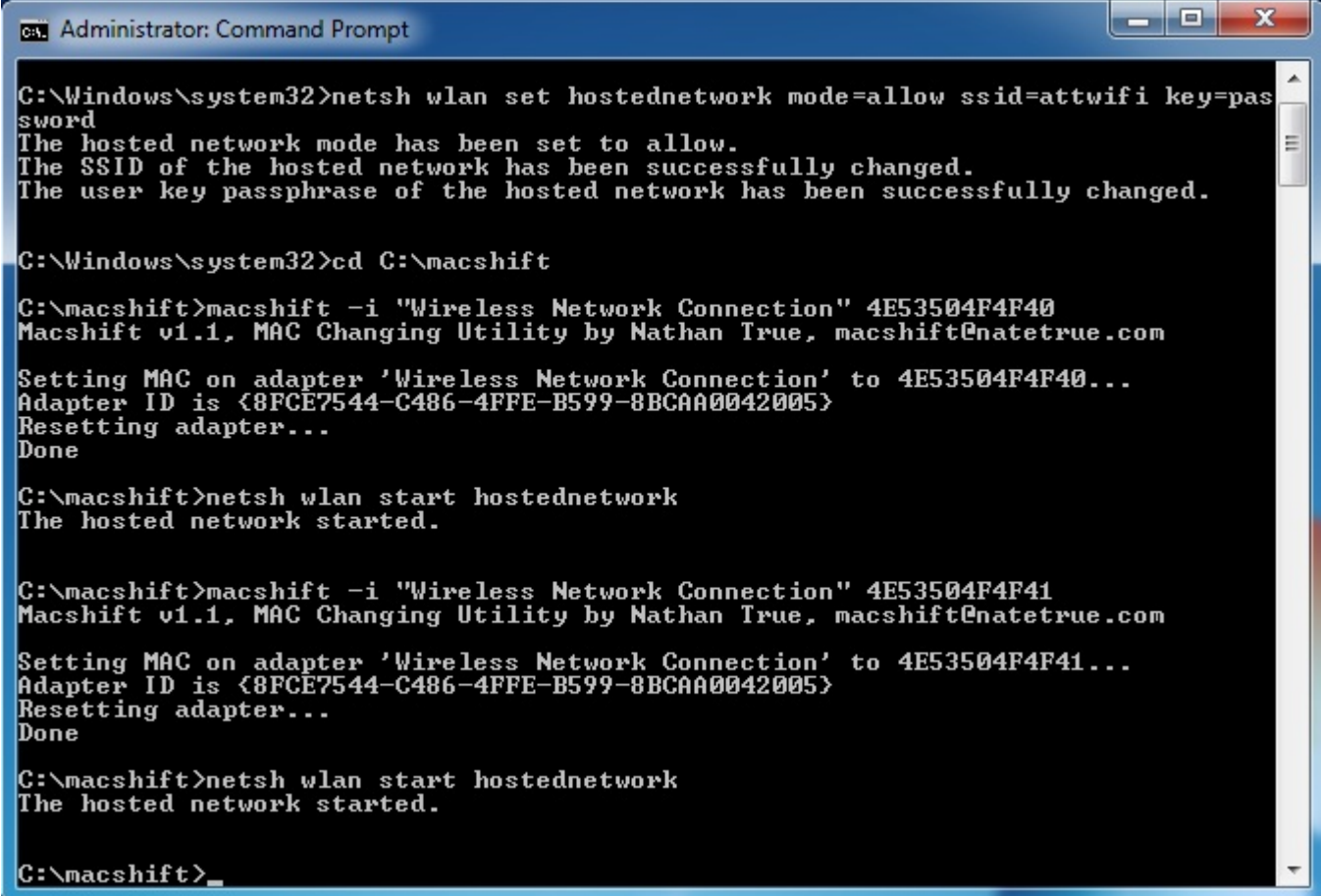


- 8) In Network Connections go to the properties page for the network connection that is connected to the internet. Under the sharing tab and tick the box next to the option to allow other network users to use this computer's internet connection.

In the drop down box below "Home networking connection" choose the name of the virtual wireless adaptor (not the SSID), for example mine was "Wireless Network Connection 2" and the click "OK"



- 9) Setup the internet connection on your 3DS to use the "attwifi" hotspot you have created. The password is the one you used in step 4. If the connection test succeeds you will be getting your first streetpass hit in a little while
- 10) To cycle through the mac address listing just use the macshift command in step 6 with the new mac address you want to use. Each time after changing the mac address you will need to restart the hotspot connection using the command from step 7



```
Administrator: Command Prompt

C:\Windows\system32>netsh wlan set hostednetwork mode=allow ssid=attwifi key=password
The hosted network mode has been set to allow.
The SSID of the hosted network has been successfully changed.
The user key passphrase of the hosted network has been successfully changed.

C:\Windows\system32>cd C:\macshift

C:\macshift>macshift -i "Wireless Network Connection" 4E53504F4F40
Macshift v1.1, MAC Changing Utility by Nathan True, macshift@natetrue.com

Setting MAC on adapter 'Wireless Network Connection' to 4E53504F4F40...
Adapter ID is {8FCE7544-C486-4FFE-B599-8BCAA0042005}
Resetting adapter...
Done

C:\macshift>netsh wlan start hostednetwork
The hosted network started.

C:\macshift>macshift -i "Wireless Network Connection" 4E53504F4F41
Macshift v1.1, MAC Changing Utility by Nathan True, macshift@natetrue.com

Setting MAC on adapter 'Wireless Network Connection' to 4E53504F4F41...
Adapter ID is {8FCE7544-C486-4FFE-B599-8BCAA0042005}
Resetting adapter...
Done

C:\macshift>netsh wlan start hostednetwork
The hosted network started.

C:\macshift>
```

- 11) Once you are done using the following command to stop the hotspot connection

`netsh wlan stop hostednetwork`

- 12) Then to reset the mac address for your wireless connection use the following command (replace "YOUR WIFI CONNECTION NAME" with the name of your wireless connection)

`macshift -i "YOUR WIFI CONNECTION NAME" -r`