

LiteFoil v22.1

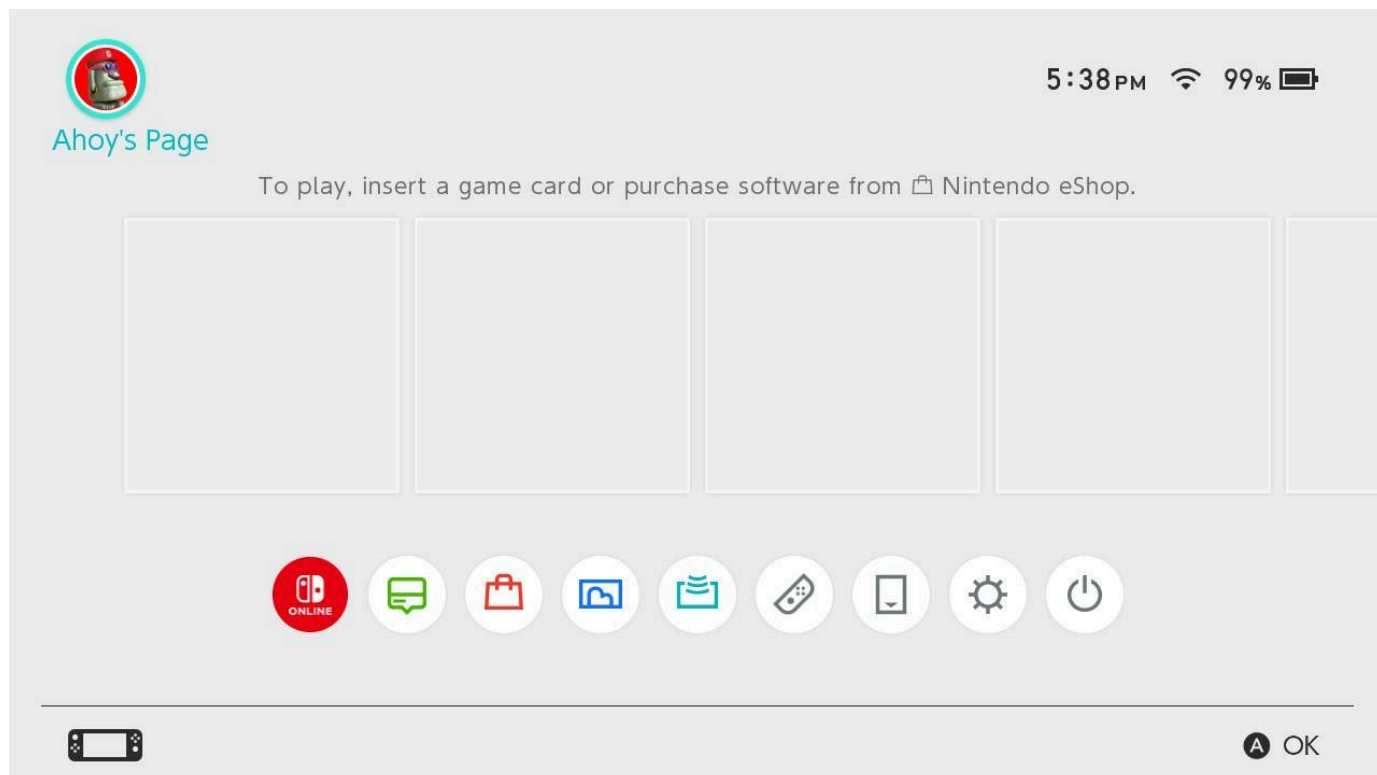
LiteFoil (LF) is a simplified version of the well-known Tinfoil, which now appears to be deprecated for newer firmwares. Our software implements several of its use cases and supports the same JSON structure, as well as encryption (utilizing our own `public.key` located in the `tools` directory) and compression using ZLIB and ZStandard standards.

LiteFoil runs on Atmosphere across any supported firmware; it has been tested on firmware 22.1.0 and is capable of installing all known valid extensions (`nsp` , `nsz` , `xci` , `xcz`). Given its minimalist design, the software does not include MTP, FTP, or other protocols. Instead, it exclusively supports HTTP/HTTPS and Google Drive via OAuth (as specified in LiteServer). Consequently, if you update your current system service to use our `public.key` , LiteFoil should be fully compatible with your existing environment.

Running LiteFoil

LiteFoil is designed to be simple; therefore, do not expect all of Tinfoil's features, neither now nor in the future. It was originally developed for my personal use, and I am sharing it only because I have received many requests. Please be aware that I do not intend to provide any updates or support. This software is provided *AS-IS* and you use it *AT YOUR OWN RISK*.

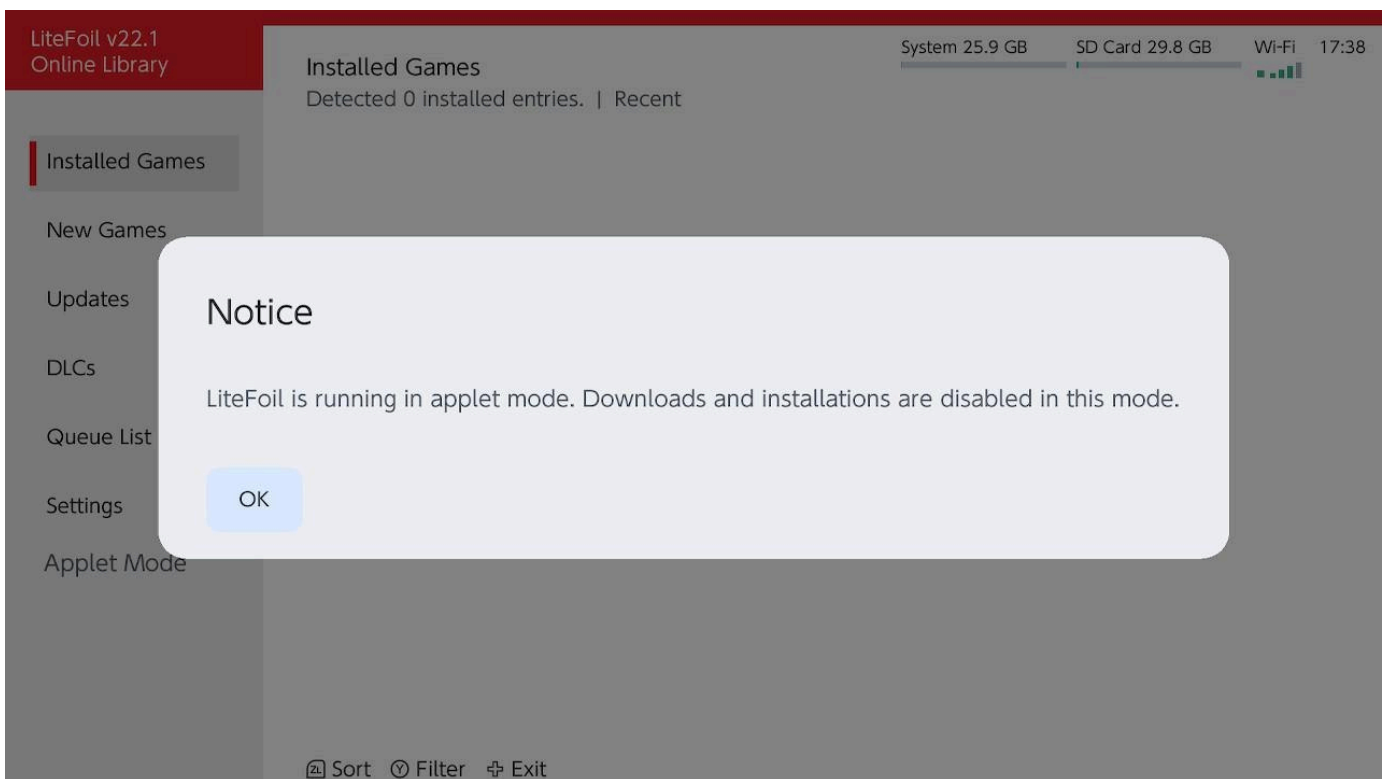
To use LiteFoil, copy it to the `/switch/LiteFoil/` directory. Please note that the path is case-sensitive, so the uppercase *L* and *F* are mandatory. Place the `LiteFoil.nro` file inside this folder. Now, let's look at a use case. I will copy it into my own homebrew environment:



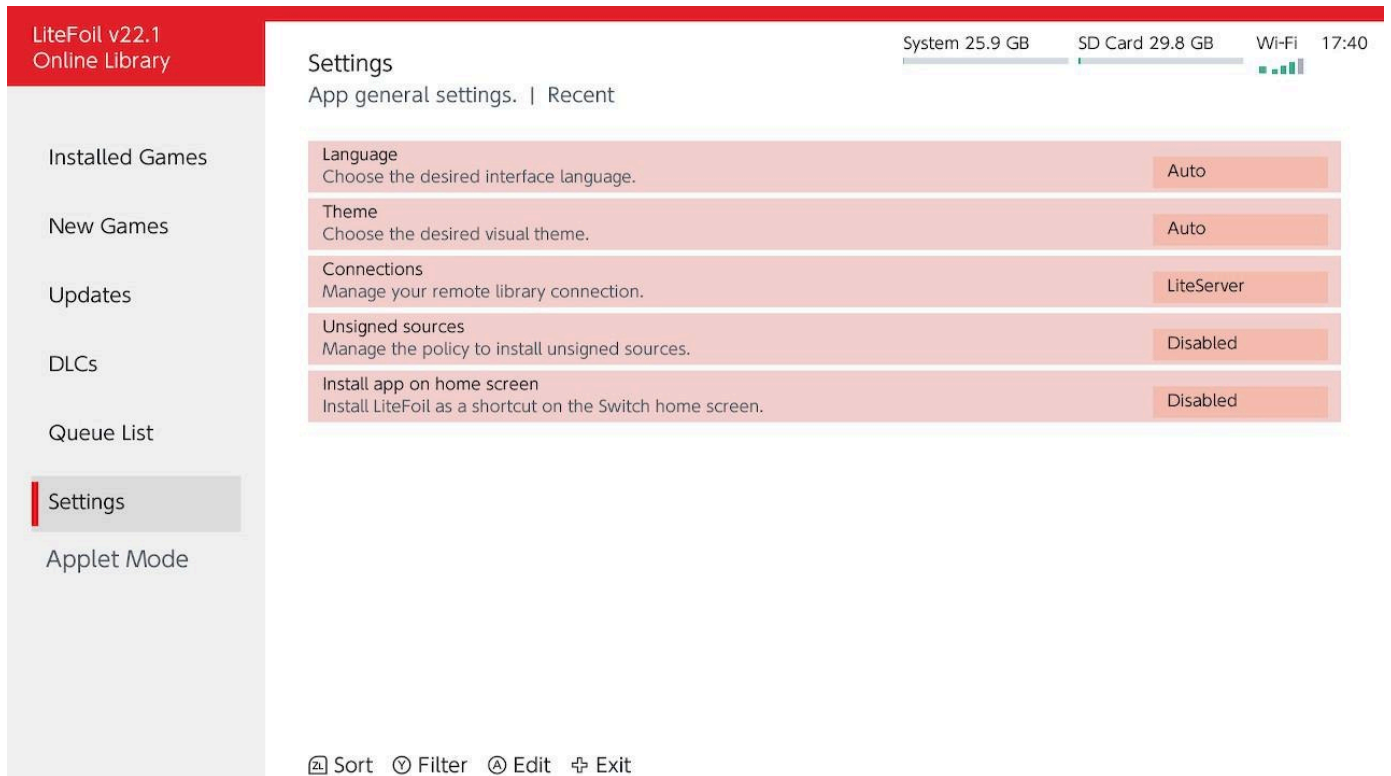
As you can see, our system is currently empty; it is a fresh install. Now, let's open the `HBmenu` (I expect it to work with `sphaira` as well):



Open LiteFoil; since we are using *Applet Mode* here, LF will detect this and prevent access to your LiteServer (or any other HTTP/Google Drive source):



Let's move to the Settings tab; as you can see, there are only a few options available:



Here we have some settings available:

- *Language* (from the system that matches: English, Spanish or Portuguese)
- *Theme* (that matches the system too: white or black)
- *Connections* (we only support one remote server)
- *Unsigned sources* (enable it at your own risk)
- *Install app on home screen* (you could run LF overriding another software with **R** or using our forwarder)

After you configure your `LiteServer` and update the parameters by pressing **A** on Connections, LF will begin loading your games.

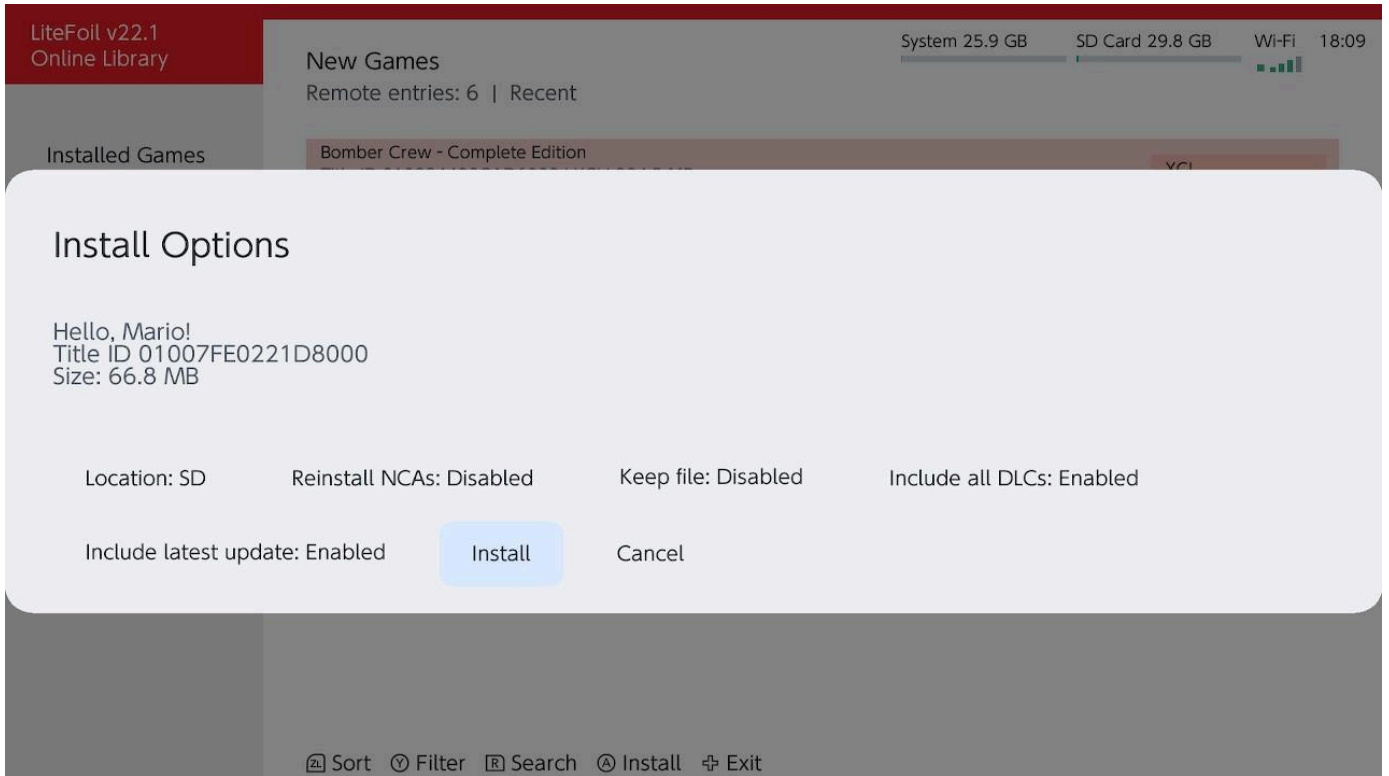
Tabs

We have six fixed tabs in the main window:

- `Installed Games` (shows installed games)
- `New Games` (shows new games not installed after load the remote index)
- `Updates` (shows updates when the remote index have newer than yours)
- `DLCs` (shows available DLCs for your current installed games)
- `Queue List` (super queue, that are saved even with you go out LF)
- `Settings` (we already see the options here)

The `Installed Games` has only one function that is show your installed games, nothing else.

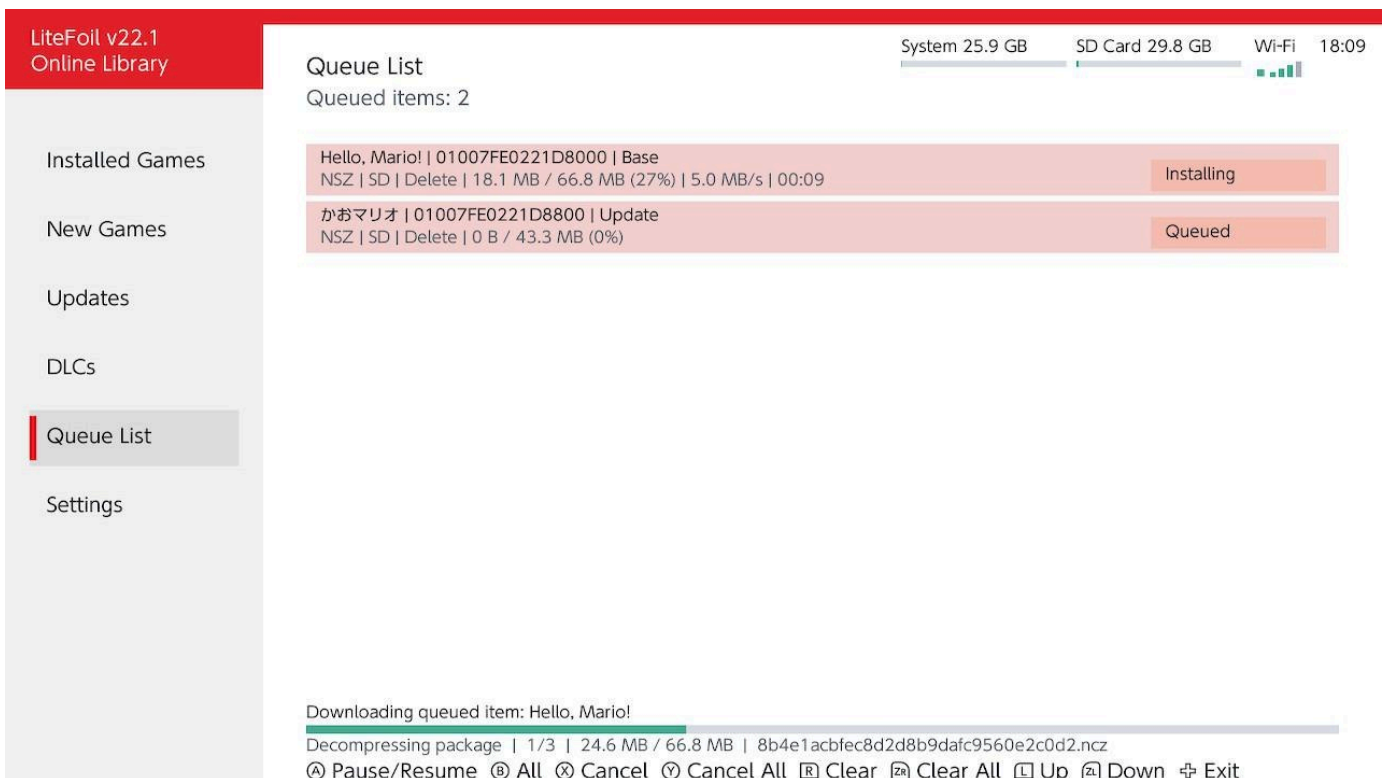
For `New Games`, `Updates` and `DLCs` you can use a search button to reduce the number of items in the list. You can change the *sort* mode (e.g.: A-Z, Z-A, Recent). In the `Queue List`, you can see the softwares being installed and you can PAUSE or RESUME a download, CANCEL it, CLEAN the queue, PAUSE or RESUME ALL, etc. That's it, not so much effort.



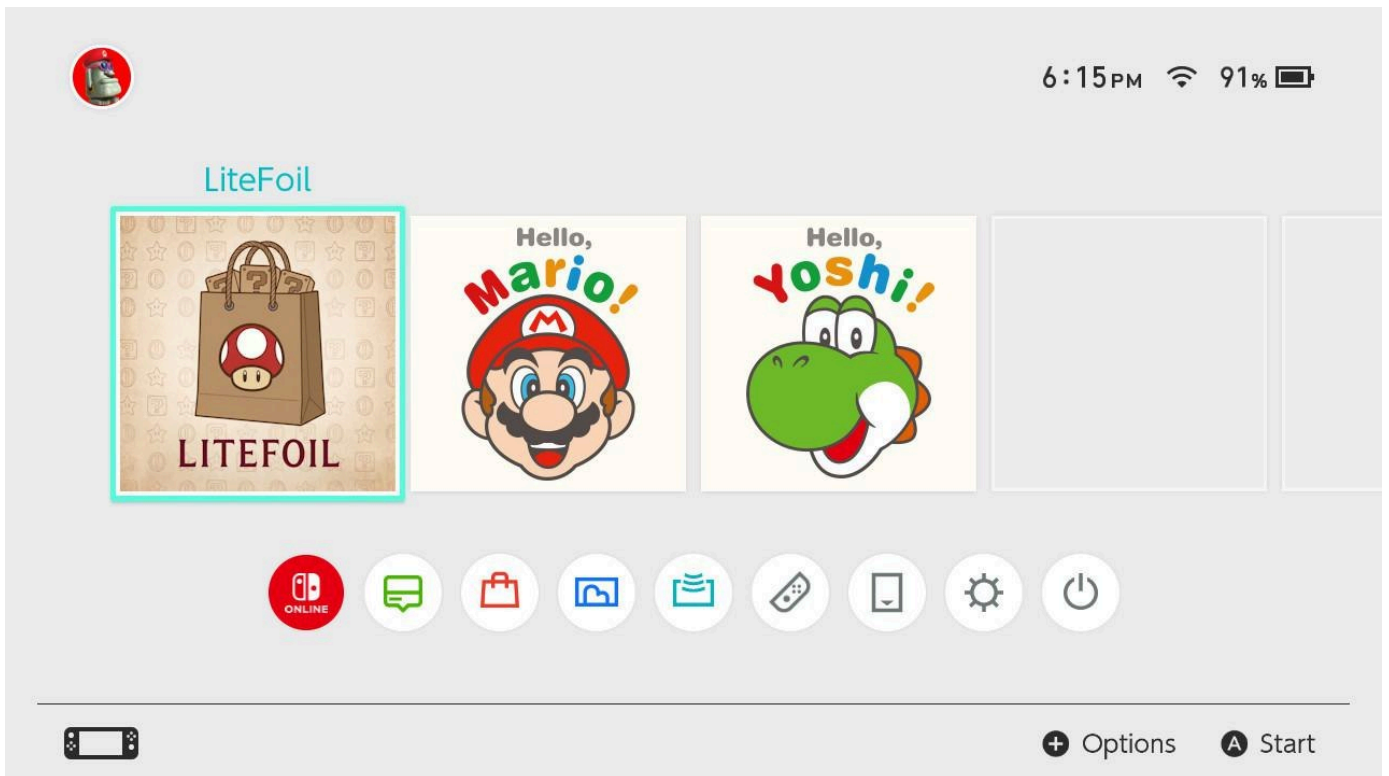
A pop-up with some options will appear, let's explain then:

- Location: SD (could be the SDCARD or the NAND)
- Reinstall NCAs: disabled (a bit technical, but means reinstall stuff)
- Keep file: Disabled (LF can download and keep the downloaded file inside the SD card after install it)
- Include all DLCs: Enabled (track all DLCs and add them to the queue)
- Include latest update: Enabled (add the latest update to the queue too)

So you could **Install** or **Cancel**, to continue. If you **Install**, everything will appears on the **Queue List**:

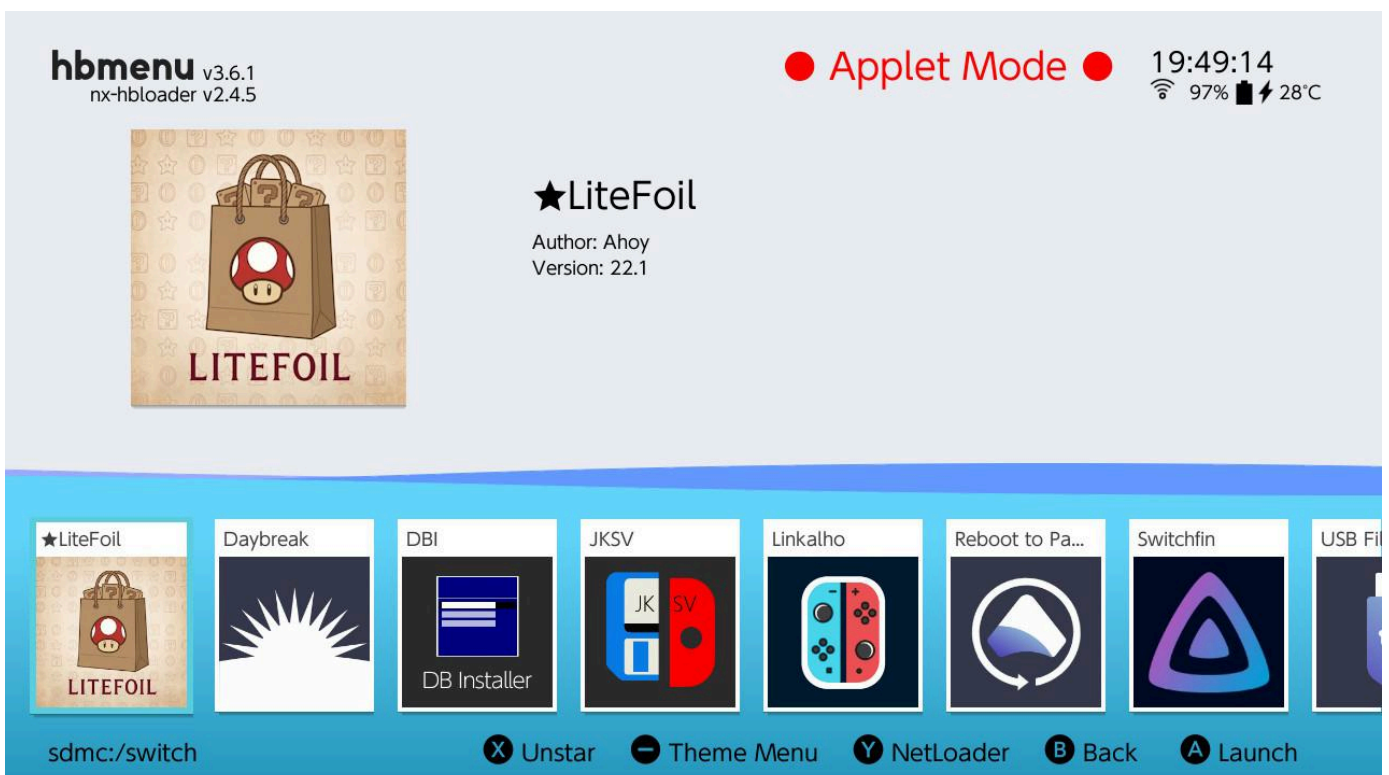


You can navigate this queue and perform several actions, such as *pausing* a single game (or all of them) to *resume* the download at another time. You can also *cancel* downloads, *clear* completed or failed tasks, or even *reorder* items in the queue (moving them up or down the list); the software will process them in order from top to bottom. To exit, simply press **PLUS** (+). Once back, you will see a list of all your installed software:

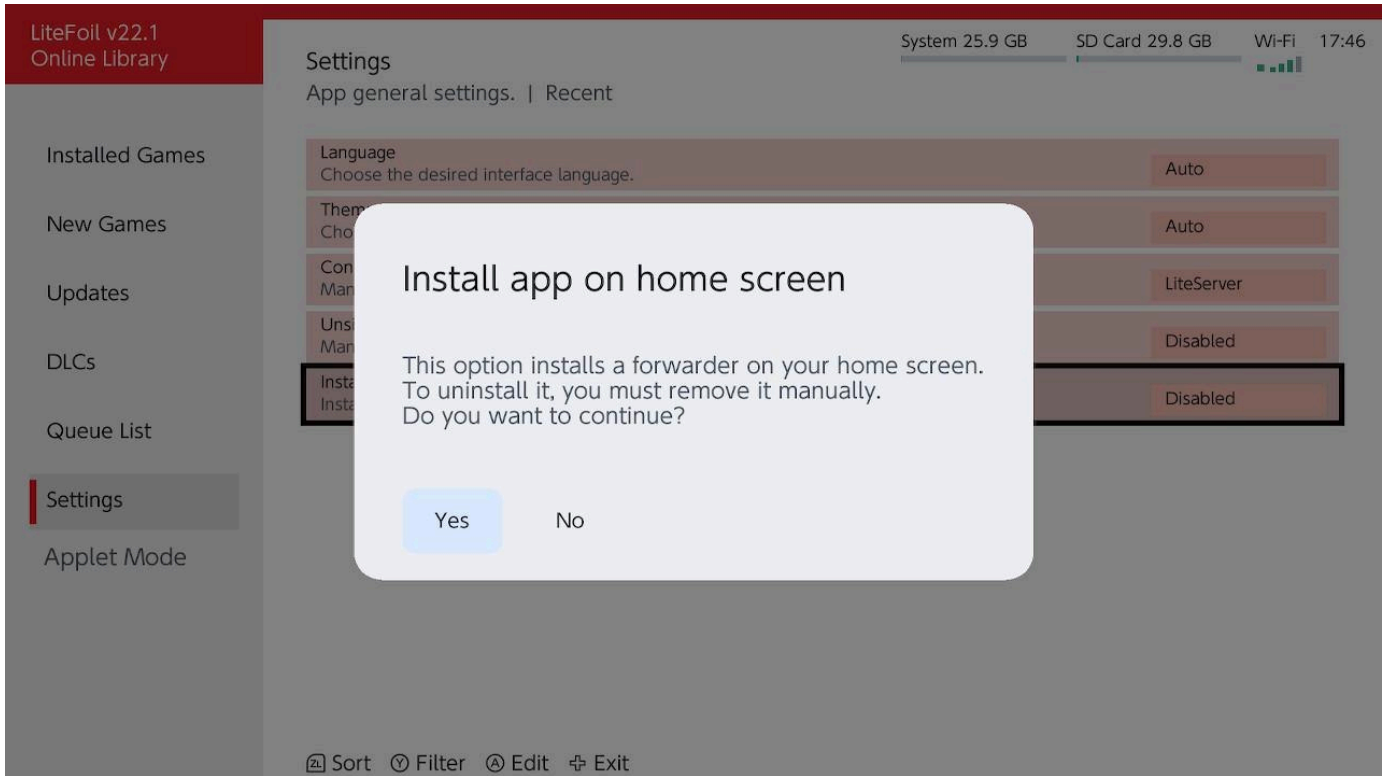


Applet or Forwarder

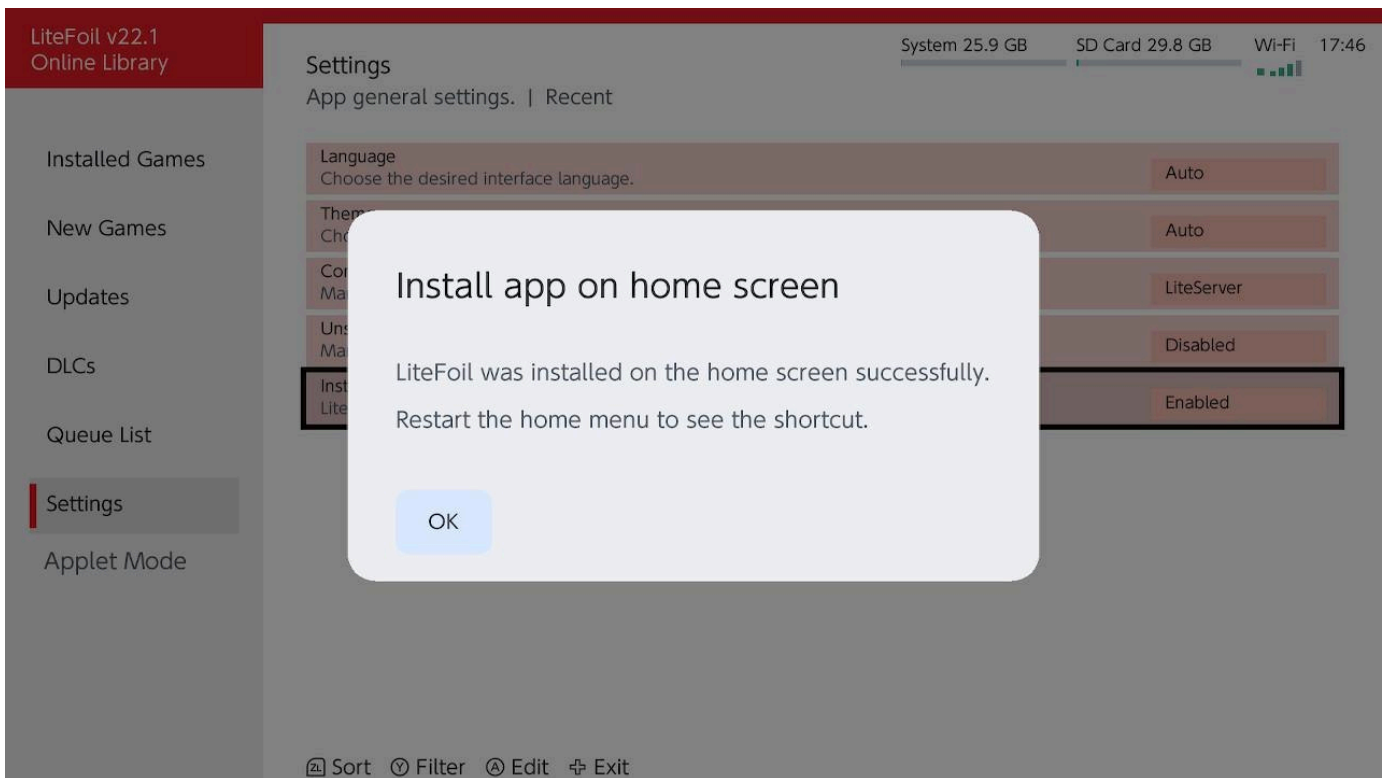
You can open LiteFoil directly from the HBmenu, but it will have limited options. To unlock the full potential of LF, you need to override a title (hold R while launching a game) or install a forwarder. If you do not have a game available to override, the forwarder is required. To use it, first open LiteFoil via the HBmenu:



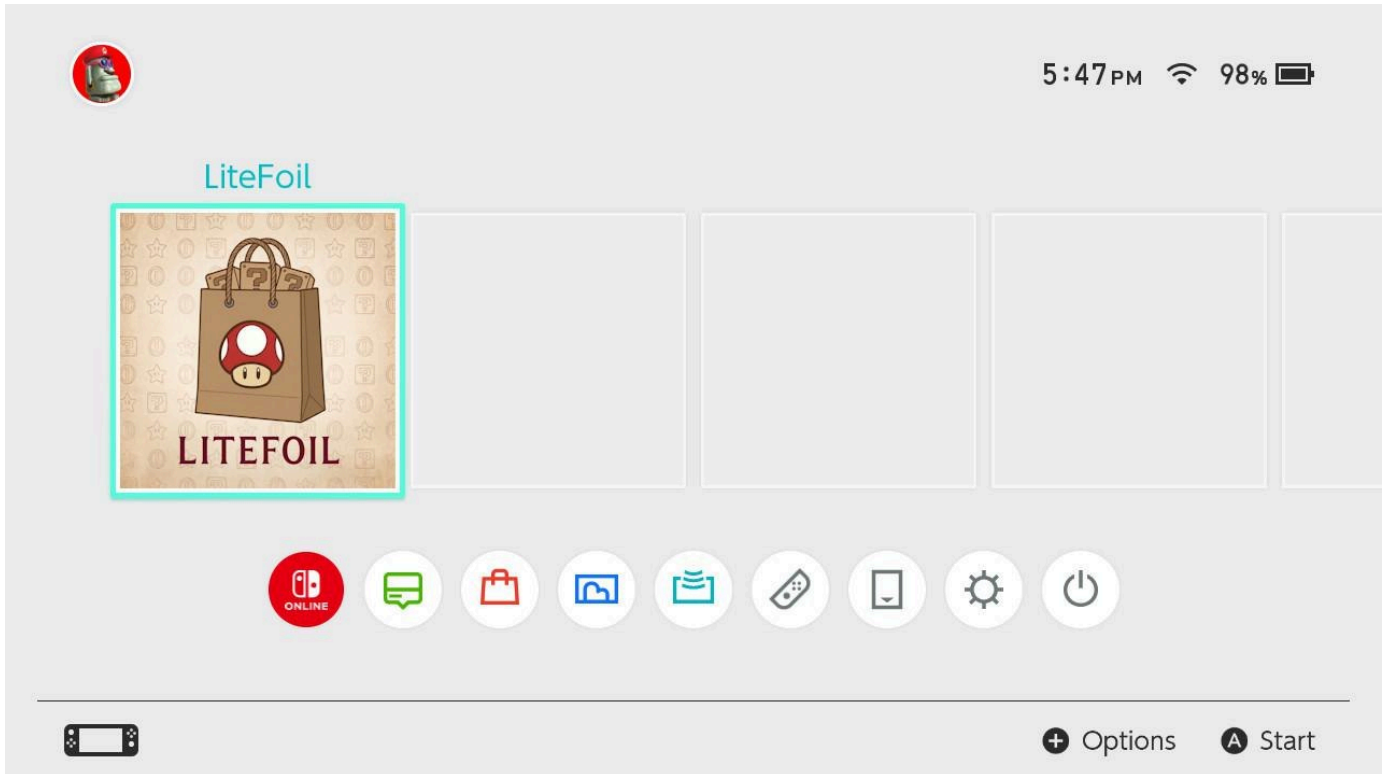
Go to the **Settings** tab and select *Install app on home screen*. This option is disabled by default, so press A to enable it. LF will then ask you to confirm:



If you select **Yes**, the application will be installed. LF will then display a message confirming that the installation was successful:



Press **OK** and return to the HOME menu:

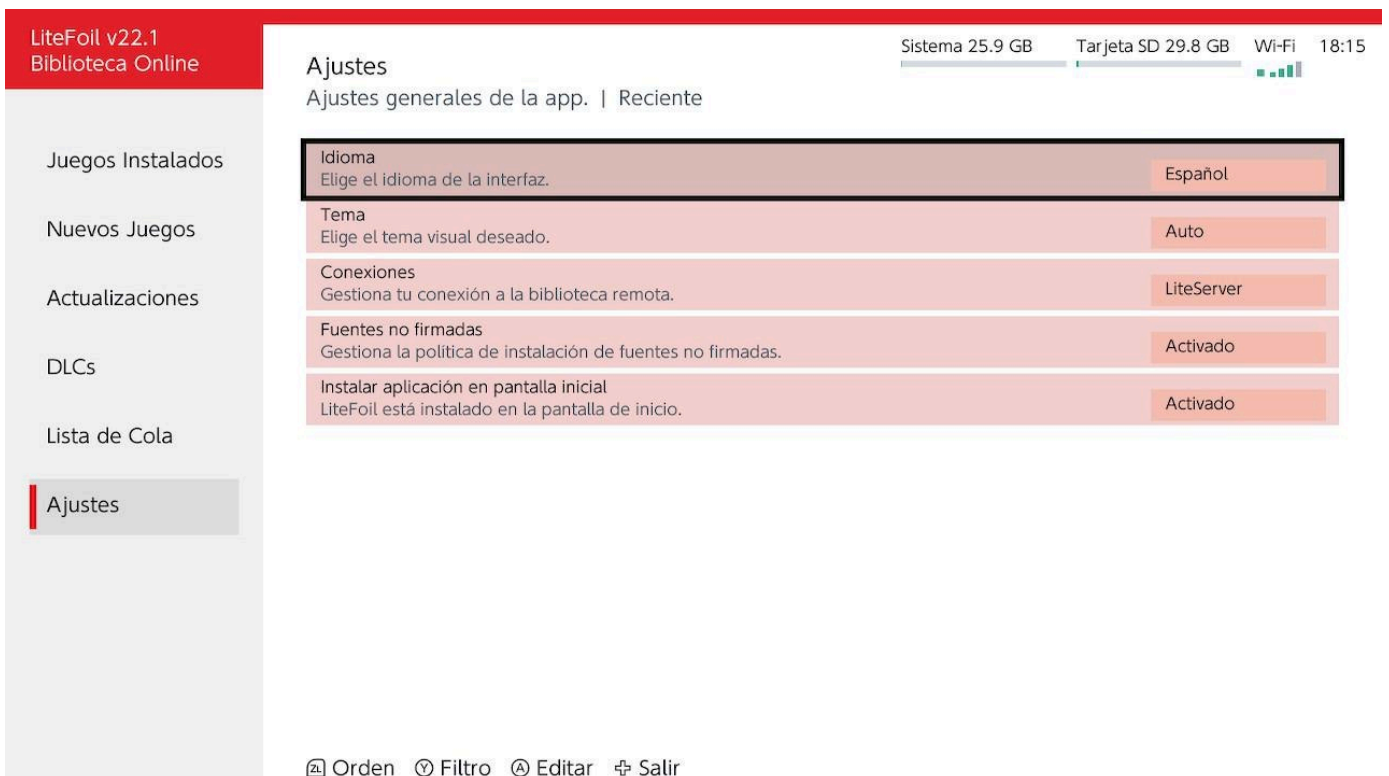


That's it! LiteFoil will now open with full memory access. If you wish to *disable* the forwarder, simply delete LiteFoil from the HOME menu; the option in the settings will then appear as **Disabled** once again.

Localization

While English is sufficient for my personal use, following several requests from some nice fellows, I have used AI to translate LiteFoil into two additional languages: Spanish and Portuguese. Please expect some minor translation errors, as these were automated, but I have done my best to ensure they are functional.

- Spanish:



- Portuguese (Brazil):

The screenshot displays the 'Configurações' (Settings) screen of the LiteFoil v22.1 application. The top status bar shows system information: Sistema 25.9 GB, Cartão SD 29.8 GB, Wi-Fi, and 18:14. The sidebar on the left includes options for 'Jogos Instalados', 'Novos Jogos', 'Atualizações', 'DLCs', 'Fila de Instalação', and 'Configurações' (highlighted). The main settings area lists the following configurations:

Configuração	Valor
Idioma Escolha aqui o idioma desejado.	Português
Tema Escolha aqui o visual desejado.	Automático
Conexões Gerencie a conexão à sua biblioteca remota.	LiteServer
Fontes não assinadas Gerencie a política de instalação de fontes não assinadas.	Ativado
Instalar aplicativo na tela inicial LiteFoil instalado na tela inicial.	Ativado

At the bottom of the settings area, there are icons for 'Ordenar', 'Filtrar', 'Editar', and 'Sair'.

Enjoy.

DISCLAIMER: AS-IS. NO WARRANTIES. USE AT YOUR OWN RISK.