



Gateway 3DS User Manual

For Nintendo 3DS and 2DS Systems

Version 1.0 – © Gateway Team 2015

Table of Contents

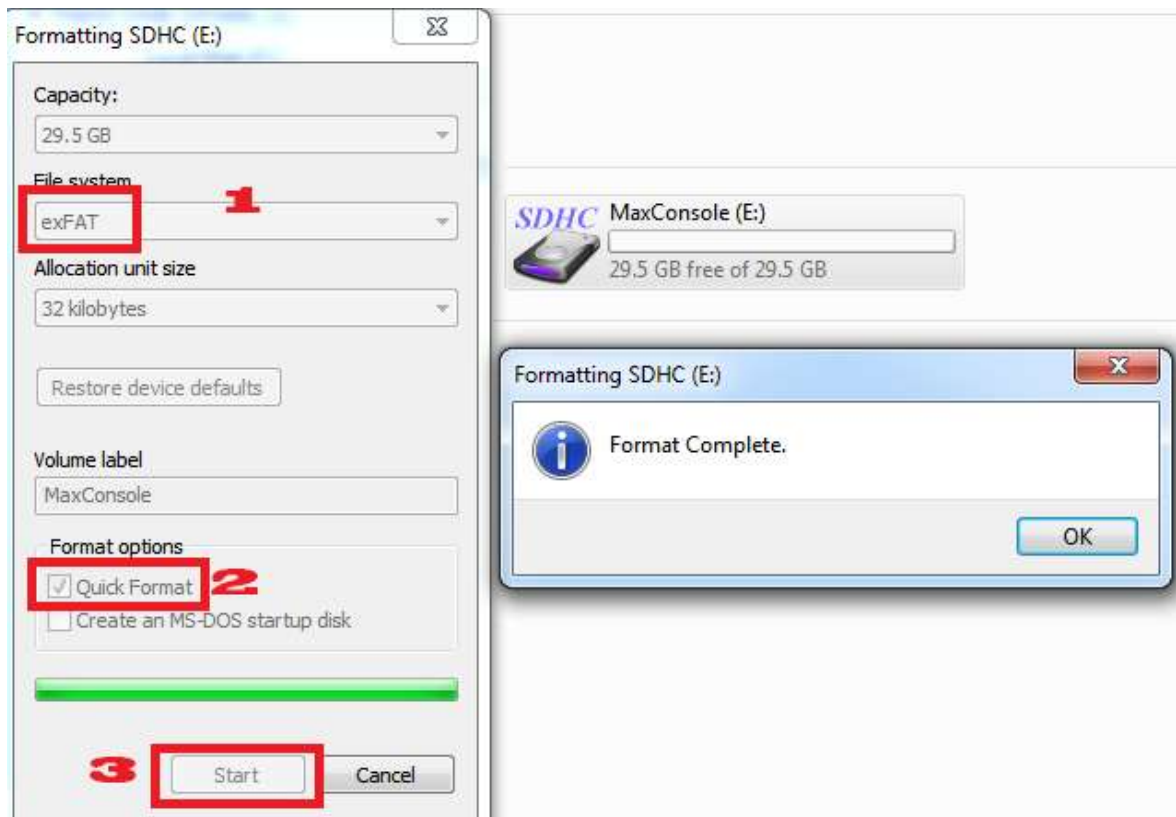
- 2. [Prerequisites and Requirements](#)
- 4. [Entering the Gateway Menu](#)
- 5. [Updating the Red Cart](#)
- 6. [Backing up SysNAND](#)
- 7. [Restoring SysNAND](#)
- 8. [EmuNAND Setup](#)
- 9. [Updating EmuNAND](#)
- 11. [Creating Game Backups \(ROMs\)](#)
- 12. [Launching Game Backups \(ROMs\)](#)
- 13. [Support for .cia Files](#)
- 14. [Downgrading 5.0+ 3DS Systems](#)
- 16. [4.x DS Profile Exploit Setup](#)
- 17. [Using the DS Profile Exploit](#)
- 18. [Troubleshooting and Tips](#)
- 20. [Retail Cartridge Support](#)

Requirements:

- A 3DS/2DS on a firmware version between 4.x and 9.2
- An SD Card for internal use and a MicroSD card for your Gateway cart(s)
- A Red Gateway flash cart
- A working WIFI connection for your 3DS/2DS to connect to
- The latest Gateway 3DS software package from <http://gateway-3ds.com/downloads>

Pre-Setup Tips:

- **Make sure the WIFI on your 3DS/2DS is kept OFF** at all times to avoid the Nintendo Update dialogue from a pre-downloaded update file unless expressly stated to turn it on.
- Make sure you have a valid wireless profile in your 3DS/2DS system menu
- Format the MicroSD for the Gateway Red cart as exFAT so you can place files over 4GB in size on them. Windows 7 and higher natively supports this from the Format menu in Computer/This PC.



- The SD card inside your 3DS/2DS should be FAT32, as it will not recognize exFAT.
- If you have files already on your SD cards, it's recommended that you erase/format them to remove complications during the setup and potential downgrade of your console
- If you have previously used Gateway 3DS to make a backup of a game cart, place one of your .3ds or .3dz files (a game ROM) on your MicroSD inside your Red Gateway cart so you can test it during the setup

Entering the Gateway Menu

Step 1: Transfer the latest Gateway 3DS Launcher.dat (located inside the downloaded archive) onto your 3DS/2DS SD card with your PC, then insert the card into your 3DS/2DS.

Step 2: Now, with your WIFI switched on, open the Web Browser on your 3DS/2DS (Blue Planetoid at the top of your Home Screen) and type in **<http://go.scmuds.com>** or **<http://go.gateway-3ds.com>** – when the bottom screen changes to white, **Press and hold the Left Shoulder button** and your 3DS/2DS will boot to the Gateway Menu:



If you have trouble booting to the Gateway 3DS menu, follow these steps exactly:

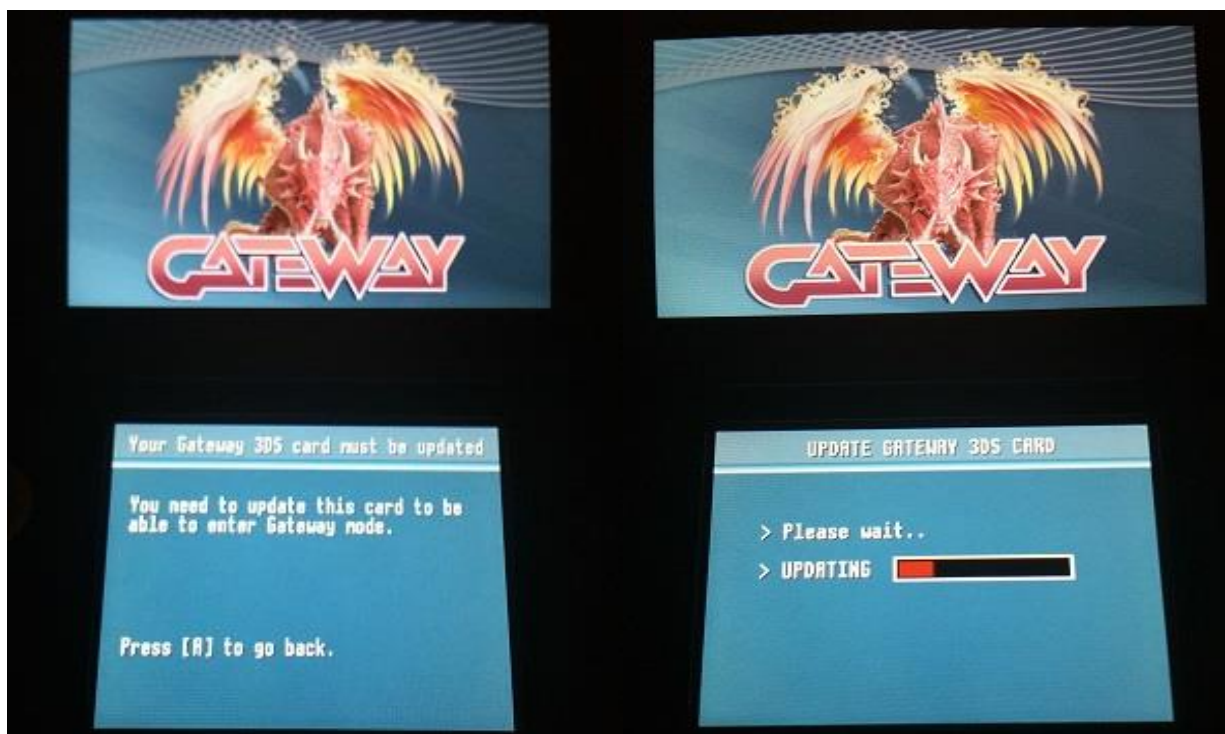
1. Turn OFF your WIFI
 2. Reboot your console
 3. Open the Browser
 4. Open the settings (wrench) and scroll down and press Delete Cookies
 5. Enter the URL (with WIFI OFF) or select your bookmark (make one now if you don't have one)
 6. Return to the browser window, switch WIFI ON, then click Refresh
-

Updating the Red Cart

Step 1: Transfer the latest Gateway 3DS Launcher.dat (located inside the downloaded archive) onto your 3DS/2DS SD card with your PC, then insert the card into your 3DS/2DS.

Step 2: Place the Gateway 3DS Red cart inside the 3DS/2DS game cart slot

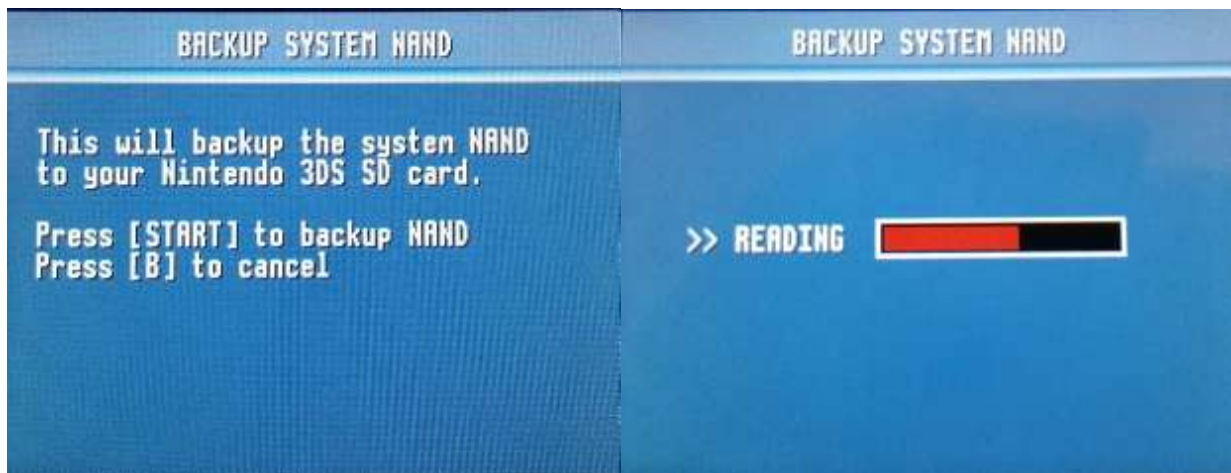
Step 3: From the [Gateway Menu](#), choose the option "Boot Gateway Mode" to be taken to the update screen where you can get the latest firmware on your Gateway 3DS Red cart. Follow the steps to begin updating your cart. This process takes about a minute, but you may want to have your power cord plugged in, just to be safe.



Backing up SysNAND

Step 1: Insert an SD card into your 3DS/2DS with at least 2GB of free space, making sure it is formatted as FAT32

Step 2: From the [Gateway Menu](#), use the Directional Pad to navigate to the “Backup System NAND” option and select it.



Step 3: Once the SysNAND (System NAND) backup is complete, shut off your 3DS/2DS and remove the internal SD card, plug it into your PC, and copy the NAND.BIN (Approx. 1GB) file that you have created to your PC for safe keeping.

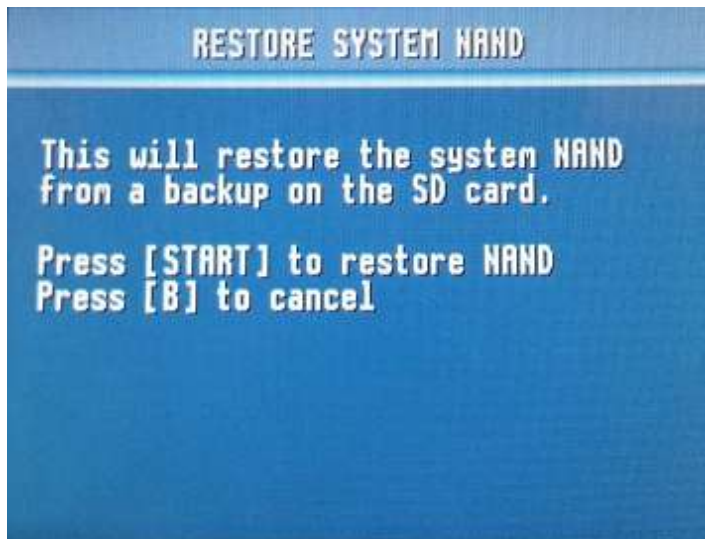
Restoring SysNAND

- Skip this section if you do not specifically need to perform this operation -

It is very important that you **do not attempt to restore the SysNAND from another console** to your 3DS/2DS. You must only restore the SysNAND that was created from the console you are trying to restore it to. Failure to do this will cause your 3DS/2DS to no longer be usable.

Step 1: Insert an SD card into your 3DS/2DS with the NAND.BIN you created earlier with the [Backup System NAND](#) feature.

Step 2: From the [Gateway Menu](#), use the Directional Pad to navigate to the “Downgrade Console” option. **Press and hold the Up directional key and press A** to enter the “Restore System NAND” mode.



Step 3: When the process has completed, shut off your 3DS/2DS when prompted. The process will now be complete and you may turn your console back on.

EmuNAND Setup

Step 1: Insert a blank SD card with only the Launcher.dat on it into your 3DS/2DS. It is recommended you use at least a 16GB capacity or higher, formatted as FAT32, so that you have plenty of room to install games and downloadable content in the future.

Step 2: From the [Gateway Menu](#), select "Format EmuNAND" -- this will **ERASE THE SD CARD INSIDE YOUR 3DS/2DS -- INCLUDING YOUR GAME SAVES AND DLC** and configure it for EmuNAND use.



Step 3: Once the process has finished, choosing the "Boot Gateway Mode" option will place you to the EmuNAND (Emulated NAND) Home Screen.

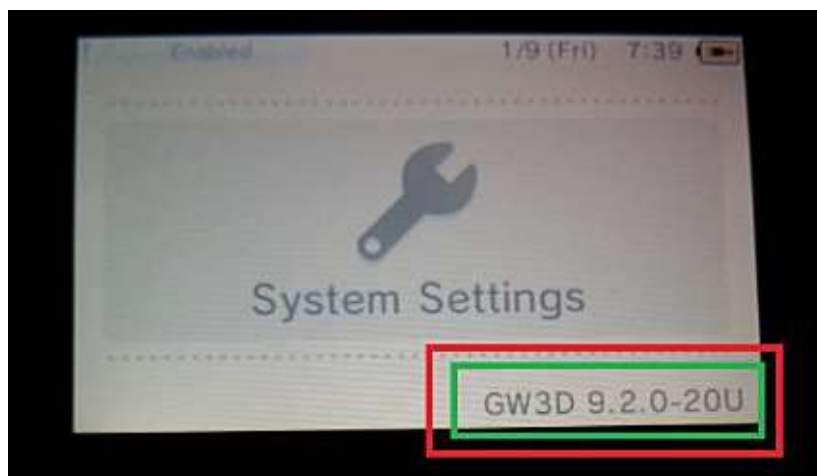
DO NOT remove your internal SD card while in EmuNAND mode! Your SD card is acting like a hard drive for the console, removing it from the system while it is on will make the 3DS/2DS crash, much like removing the hard drive from a running computer will.

Updating EmuNAND

It is important that you **DO NOT EXIT** your **Settings menu** at any point before or during the setup and updating of your EmuNAND. Doing so will force you out of Gateway Mode and back to the SysNAND where you **MAY ACCIDENTALLY UPDATE YOUR SYSNAND FIRMWARE.**

Step 1: With [EmuNAND configured](#), go to the [Gateway Menu](#) and select “Gateway Mode”

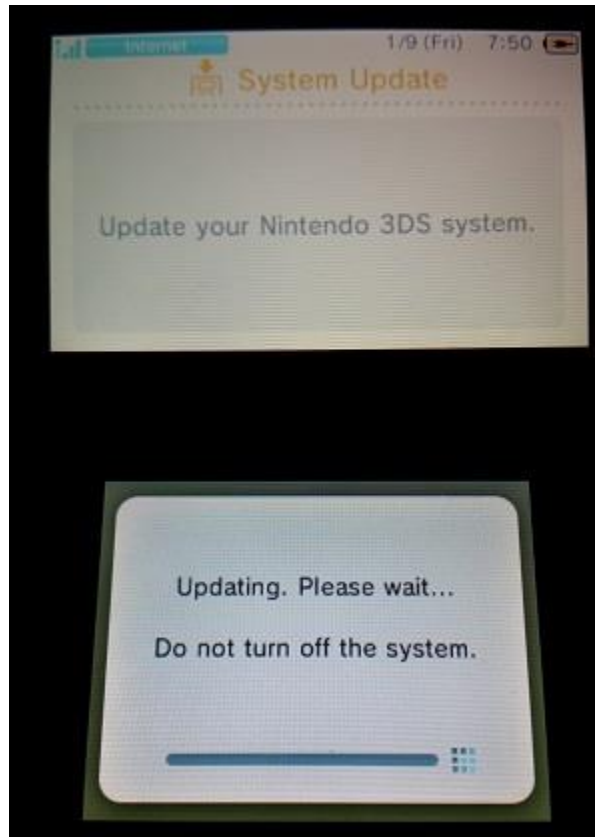
Step 2: Enter the System Settings and look for “GW3D” preceding your firmware version:



!!! STOP HERE !!!

**DOES YOUR 3DS/2DS SAY "GW3D" BEFORE THE VERSION NUMBER?
IF NOT, START OVER. IF YOU KEEP GOING WITHOUT “GW3D” YOU
WILL UPDATE YOUR SYSNAND AND BE LOCKED OUT OF GATEWAY!**

Step 3: **DO NOT LEAVE THE SETTINGS MENU AT ANY POINT.** Choose "Other Settings" and on Page 4 you will find the "System Update" option. Turn your WIFI on and select this option. Let it download and apply the update to your EmuNAND.



Step 5: After your system reboots, it will place you back in SysNAND. Return to the Gateway Menu without holding L and it should automatically place you back into EmuNAND. Check the System Settings again to verify the update. **Leaving settings will always place you in SysNAND.**



Creating Game Backups

Step 1: Make sure to have an SD card with plenty of free space inside the 3DS/2DS. You may use the same SD card that your EmuNAND is set up with for this step.

Step 2: Place the original game cartridge that you wish to back up into the cartridge slot on your 3DS/2DS.

Step 3: From the [Gateway Menu](#), select “Backup 3DS Game Cartridge”. Take note of the Game Code during this process, which can take up to 20 minutes for very large games.

Step 4: Once the process completes, shut off your 3DS/2DS and remove the internal SD card. Place the SD card into your computer and you will find a ROM file with the same name as the Game Code. Move this file to your computer for later use, as it cannot be played from the internal SD card.

When creating your game backups, it's a good idea to rename the extension of your ROM from .3ds to .3dz on your computer – this tells the Gateway system it is compatible for online play. Note that **this will only work for games you have backed up yourself and does not work for game ROMs you may have obtained elsewhere.**

Launching Game Backups

When playing a game backup, you must **press Home and then Close the software** to write the save file to the 3DS/2DS SD card. If you skip this step, your current save games will be lost. Depending on the size of the save file and your SD card speed, **this could take some time**. Please be patient while it closes the software.

Step 1: Place your game ROMs onto a MicroSD card with your computer, they can be either in .3ds or .3dz format. It is recommended that you format your MicroSD card as exFAT so that it can hold files larger than 4GB in size. Place this inside your Gateway Red cart and then insert both into the game cart slot on your 3DS/2DS.

Step 2: From the [Gateway Menu](#), select “Boot Gateway Mode”. Note that while [EmuNAND setup](#) is not required to play game backups, it is recommended so that you can apply game updates and participate in online features, such as multiplayer.

Step 3: From the 3DS/2DS Home Menu, press the Select button and a ROM selector will appear on your top screen:



Step 4: Using the Directional Keys, select the game backup you wish to play and press A. This will change the cartridge panel on your bottom screen to that of the selected game backup. Choosing this will then take you into the game just like a normal cartridge would.

Support for .cia Files

Requirements:

- While [EmuNAND setup](#) is not required, it is STRONGLY recommended. A bad write while in your SysNAND could result in a non-functioning 3DS/2DS unit
- A .cia manager application. While Gateway 3DS supports .cia files, it does not natively contain a method to install/remove them. There is a publicly available homebrew .cia manager called Big Blue Manager (or Title Manager), created by the Big Blue Box team

Step 1: Place the .cia manager (in .3ds format) on the root of your Gateway Red MicroSD card. If it is in .cia format, you need to re-download it as .3ds format.

Step 2: With your 3DS/2DS system off, remove the internal SD card and copy your .cia file to it with your computer. The .cia file does not need to be in the root of the SD card as BBM (Big Blue Manager) supports folder browsing. Place the card back inside your 3DS/2DS when finished.

Step 3: From the Home Menu in Gateway Mode (EmuNAND recommended) press Select to open the Multi ROM selector, choose the BBM (called "Title Manager") and press A. This will change the cartridge tile on your bottom screen to BBM which you can then launch.

Step 4: Using the Directional Keys, navigate to the "SDMC" listing, then navigate to the folder you placed your .cia in. Highlight your file and press A to "import" (install) it. You may also remove any installed .cia files from this menu as well.

Step 5: When finished, press the Home button and Close the app. On the Home Screen, you should now see your .cia app installed and ready to use.

Applications and Games that are installed in Gateway Mode will only function in Gateway Mode and will produce errors when you try to run the applications from SysNAND or Classic Mode.

Downgrading 5.0+ 3DS Systems

Please read the entire guide up to this point so that you are familiar with your 3DS and Gateway functionality. This is a potentially dangerous operation and can cause your 3DS to become unusable. Make absolutely sure you get the EXACT downgrade pack for the CONSOLES REGION. DO NOT ATTEMPT to downgrade to another region!

Benefits:

- By downgrading to 4.x you can install the DS Profile exploit, which will allow you to get to the Gateway Menu without the need for an internet connection or any external devices
- In 4.x you may create fake Access Point Profiles in all 3 slots so that you will never have a chance of accidentally downloading the Nintendo update while the unit is in Sleep Mode. This also helps to “child-proof” your system against accidental updates
- You can use your Gateway Blue cart to play DS game backups

Disadvantages:

- This has had good results so far with the community, but you **may make your 3DS/2DS completely unusable** while trying to perform the downgrade if it fails or loses power
- If you play any retail cartridges (ROMs and .cia games do not have this problem) on a newer firmware, downgrading to 4.x will make their saves unreadable. In other words, **YOU WILL LOSE YOUR RETAIL SAVE GAMES**. Currently there is no way to back them up and make them work on SysNAND 4.x -- even if you go into Classic Mode with EmuNAND 9.x they still will not read and will show as corrupted in game.

Requirements:

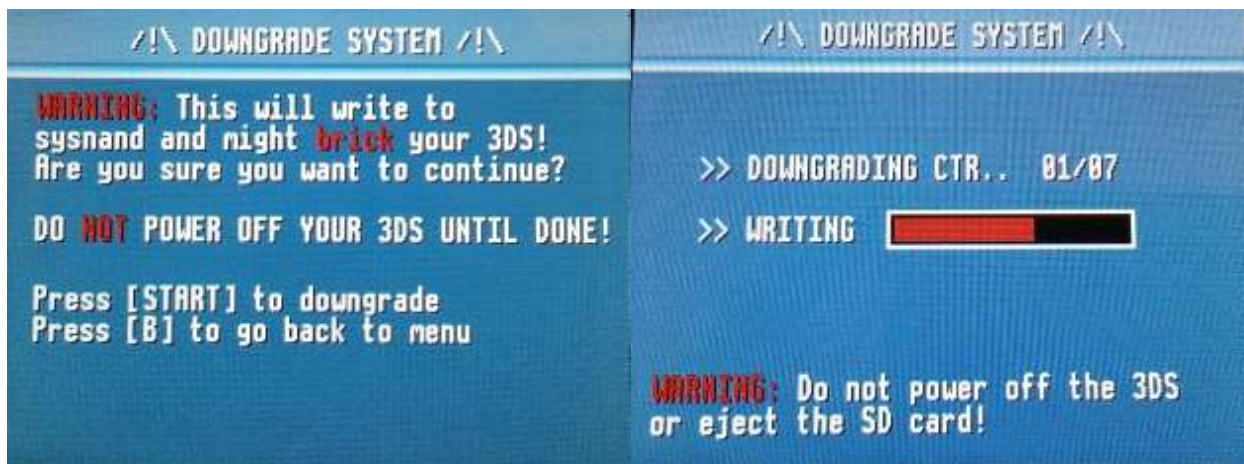
- While [EmuNAND setup](#) is not required, it is recommended you have already performed this step and updated it to the latest version
- The downgrade pack for your console’s region on your internal SD card, available at <http://gateway-3ds/downloads>
- A [SysNAND backup](#) is required and must be placed on the 3DS internal SD card prior to starting the downgrade process

This process will only work on the Nintendo 3DS system, **it will not work on a Nintendo 2DS** since there was never a 4.x firmware written for the 2DS system

Step 1: **PLUG IN YOUR POWER CORD**

Step 2: With your SysNAND backup and Downgrade Pack on your internal SD card, visit the Gateway Menu and select “Downgrade Console”.

Step 3: Follow the prompts to being your console downgrade:



Step 4: When prompted, power off your system. The downgrade process will now be complete. Power on your 3DS and check the System Settings to verify the downgrade. Note that your console firmware may be 4.2 or 4.5, depending on region, and there is no advantage to having one over the other.

4.x DS Profile Exploit Setup

Requirements:

- A 3DS system on firmware version 4.x (4.2, 4.5, etc.)
- A Gateway 3DS Blue cart
- A MicroSD card, formatted as FAT32, with the “Blue Card” files on it from the Gateway 3DS archive.

Step 1: With the MicroSD card inside your Gateway Blue cart, insert it into the 3DS game slot and power the system on.

Step 2: Your game card tile will show the game “Deep Dungeon”. Select this to be taken to the exploit installation menu. Follow the prompts, selecting the proper region, to install the DS Profile Exploit:



Step 3: Power the system off when prompted. The DS Profile Exploit will now be installed on your 4.x system.

Using the DS Profile Exploit

Running a DS ROM or DS application will remove the DS Profile Exploit from your system and will require you to reinstall it.

Step 1: With the DS Profile Exploit installed and Gateway Red cart in your game slot, turn on your 3DS and open the System Settings.

Step 2: Select “Other Settings” followed by “Profile” and finally “Nintendo DS Profile”. This will cause your 3DS system to load the Gateway Menu and will automatically load Gateway Mode if you have it set up already.

To get to the Gateway Menu without launching directly into Gateway Mode, hold the Left Shoulder button immediately after selecting “Nintendo DS Profile”

Troubleshooting and Tips

Problem: Games won't download/install Game Updates

Solution: Visit the e-Shop while in EmuNAND and download the update from there. It will automatically apply the next time you start the game

Problem: "SPI TEST FAIL" when testing the Gateway 3DS Red cart

Solution: Please update your Launcher.dat to version 3.0.1 or higher and run the test again

Problem: "Fragmentation Error" when selecting a ROM on the 3DS/2DS

Solution: This means your ROM file is not stored in consecutive blocks on your MicroSD card inside your Gateway Red cart. Try deleting the ROM and copying it to the MicroSD card again. If this fails, try reformatting your MicroSD and copying all your ROM files to it at the same time to ensure proper alignment. If the problem persists, you can obtain a tool from the Gateway website to help defragment the ROM files on your MicroSD card.

Problem: Screen becomes garbled or system locks up trying to enter the Gateway Menu

Solution: Unfortunately, this can occur every once in a while due to the nature of the system. First, make sure you have the latest Launcher.dat on your internal SD Card. If your 3DS/2DS crashes, you may have to hold the power button for 10-15 seconds for it to shut down completely. If the problem occurs frequently, please visit the support forums and open a new discussion with your symptoms.

Problem: After the installation of a .cia file, you must "unwrap" the application after every boot

Solution: Remove your internal SD card and Gateway Red cart. Power the system on and do a system format from the System Settings menu. Once finished, power the system down and replace the SD card and Gateway Red cart. Power the system back on and test again.

For additional help, please visit the support forums and open a new topic with your issue: http://www.maxconsole.com/maxcon_forums/forums/108-Official-Gateway-3DS-Support-Forum

- Leaving home and won't have internet access? Grab this app from the Google Play Store https://play.google.com/store/apps/details?id=s.gw3ds_loader and use the built in phone/tablet tethering or a third party tethering app to launch it, even offline!

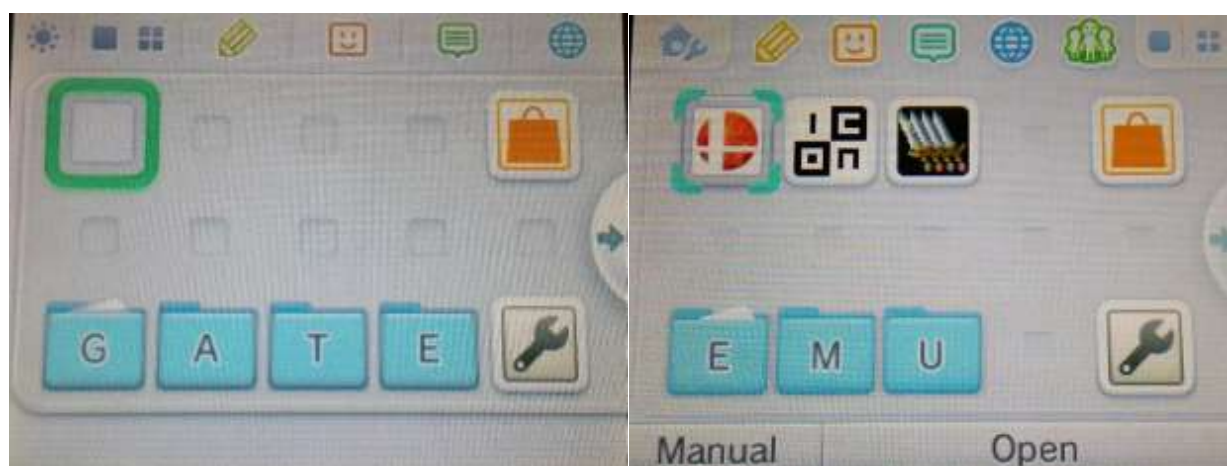
- Games that use a large amount of memory (Smash Bros., Monster Hunter, etc.) will cause a soft reboot and send you out of EmuNAND when you close them. When you are done playing them, try launching a different application (such as Streetpass or the e-Shop) then exiting from there, this will preserve your EmuNAND state.

- Lending your 4.x 3DS to an unexperienced player or young child? You can set up “dummy” Access Points so it is impossible to access the internet from SysNAND and accidentally run any updates. EmuNAND keeps a separate set of Access Points to get online with.



Select a manual setup and type in a random AP name and random 8 character password

- Want an easy way to tell if you are in SysNAND or EmuNAND? Use the Home Screen folders!



4.2 SysNAND

9.4 EmuNAND

Retail Cartridge Support

Step 1: From the [Gateway Menu](#), select “Classic Mode”. This will boot your system to the EmuNAND Home Screen.

Step 2: At the Home Screen, insert your retail cartridge and it will show up and work as normal.

**While in Classic Mode installed .cia applications and ROM files will not work.
You must return to Gateway Mode to use these features.**

East Eggs/Extras

1. While in the Gateway Menu, you can hold Down on the Directional Pad and Press B to do a quick shutdown.